

PETROLEUM APPLICATION GUIDE

Exterior & Interior LED lighting



The **complete solution**
for all your lighting needs.

The **complete solution** for all your lighting needs.

Founded in 1957 to design and develop high-reliability lighting products, SloanLED® quickly became a pioneer in LED technology. Our founder, Charles Sloan, was driven by two simple principles: employ the latest technologies to develop quality lighting products and take excellent care of our customers.

SloanLED has continued to deliver on these principles as a leading supplier of aircraft indicator lights for nearly 65 years, and our commitment to producing safe, reliable, lighting solutions that withstand the elements and harshest weather conditions, keeps us at the forefront of the lighting market. Our high-efficiency, long lasting solutions don't just brighten your brands; they represent significant energy cost reductions, maintenance cost savings, easy installation, faster ROI, and deliver exceptional performance with the industries best product and labor warranties.



TABLE OF CONTENTS

EXTERIOR LIGHTING

Canopy	Page 4
Soffit	Page 5
Garage	Page 6
Area Lighting	Page 7-8
Pole Solutions	Page 9
Wall Mount	Page 10-11

Flood Lighting	Page 12
Border Tube, Cove, & Fascia	Page 13

INTERIOR LIGHTING

Interior Recessed / Surface	Page 14-15
Open Ceiling	Page 16

Let your petroleum station shine as a beacon of convenience and safety with attention-grabbing signage, and brilliant canopy and parking area lighting that pump-up energy savings and reduce operating costs.



REFRIGERATED DISPLAY

Interior Recessed/Surface.....Page 17

SIGN LIGHTING

Sign Cabinet / BoxPage 18

Channel Letter.....Page 19

**Relax, we've got
you covered.**



In addition to our industry-leading 5 and 10-year product warranties, all SloanLED Lighting Systems products are protected by our **Performance+ Service Warranty**. In the event of a product failure, email service@sloanled.com and our team will have you up and running – replacing or repairing the item on-site!

CANOPY

Exterior Lighting Fixtures

For more information,
visit SloanLED.com

PDL3 MODUS

PDL3 MODUS sets a new standard in canopy/soffit lighting with its slim, lightweight, 1" (25 mm) design, optimized Type V symmetric distribution, field adjustable outputs, and IP68 rating offering the industries best protection from dust and water intrusion.

PDL3 MODUS Standard

Dimensions LxWxH	16" x 16" x 1" (406 x 406 x 25 mm)
Color temp. (CCT)	4000 K, 5000 K
Distribution	Symmetric (Type V)
Lumen output	5,670 - 16,880
Warranty	10-yr Product & 2-yr On-site Labor/Service Warranty



PDL3 MODUS Surface Mount Standard & High Output

Dimensions LxWxH	16" x 16" x 3.6" (406 x 406 x 91 mm)
Color temp. (CCT)	4000 K, 5000 K
Distribution	Symmetric (Type V)
Lumen output	5,670 - 26,040
Warranty	10-yr Product & 2-yr On-site Labor/Service Warranty



PDL3 MODUS High Output

Dimensions LxWxH	16" x 16" x 1" (406 x 406 x 25 mm)
Color temp. (CCT)	4000 K, 5000 K
Distribution	Symmetric (Type V)
Lumen output	20,700 - 26,040
Warranty	10-yr Product & 2-yr On-site Labor/Service Warranty



PDL3 MODUS Mini (Outside US & Canada only)

Dimensions LxWxH	13" x 13" x 3.56" (330 x 330 x 90.5 mm)
Color temp. (CCT)	4000 K, 5000 K
Distribution	Symmetric (Type V)
Lumen output	5,670 - 16,880
Warranty	10-yr Product & 2-yr On-site Labor/Service Warranty



HighLINER 3

Dimensions LxWxH	1', 2', 4', 6', & 8' x 2.38" x 1.03" (0.3, 0.6, 1.2, 1.8, 2.4 m x 60 mm x 26 mm)
Color temp. (CCT)†	3500 K, 5000 K
Distribution	Linear
Lumen output	5,670 - 26,040
Warranty	10-yr Product & 2-yr On-site Labor/Service Warranty



† Contact SloanLED Sales for additional CCT options.

NEW PRODUCT

Symphony Garage/Soffit Fixture



Dimensions	18" (457 mm) Dia. x 3.5" (87.5 mm) D
Color temp. (CCT)	4000 K, 5000 K
Distribution	Type VS
Lumen output	4,375 - 8,378
Warranty	5-yr Product & 2-yr On-site Labor/Service Warranty



PDL3 MODUS Standard

Dimensions L x W x H	16" x 16" x 1" (406 x 406 x 25 mm)
Color temp. (CCT)	4000 K, 5000 K
Distribution	Symmetric (Type V)
Lumen output	5,670 - 16,880
Warranty	10-yr Product & 2-yr On-site Labor/Service Warranty



NEW PRODUCT

Symphony Soffit Fixture, 12"



Dimensions	12" x 12" x 3.4" (304.8 x 304.8 x 85.6 mm)
Color temp. (CCT)	3000 K, 4000 K, 5000 K
Distribution	Type V
Lumen output	2,839 - 5,443
Warranty	5-yr Product & 2-yr On-site Labor/Service Warranty



SurfLite 1

Dimensions L x W x H	10.1" x 10.1" x 3.3" (255.5 x 255.5 x 83.7 mm)
Color temp. (CCT)	3000 K*, 4000 K, 5000 K
Wattage	45 W†, 65 W†
Lumen output	5,850 - 8,450
Warranty	5-yr Product & 2-yr On-site Labor/Service Warranty



* Available by special order, please contact SloanLED for lead times.
† DLC Classified as "Low Bay" distribution.

NEW PRODUCT

Symphony Soffit Fixture, 18"



Dimensions	18" x 18" x 3.0" (457.2 x 457.2 x 77.2 mm)
Color temp. (CCT)	3000 K, 4000 K, 5000 K
Distribution	Type V
Lumen output	2,839 - 5,443
Warranty	5-yr Product & 2-yr On-site Labor/Service Warranty



Relax, we've got you covered.



In addition to our industry-leading 5 and 10-year product warranties, all SloanLED Lighting Systems products are protected by our **Performance+ Service Warranty**. In the event of a product failure, email service@sloanled.com and our team will have you up and running – replacing or repairing the item on-site!

GARAGE

Exterior Lighting Fixtures

For more information,
visit SloanLED.com



NEW PRODUCT

Symphony Garage Lighter



Dimensions	18" (457 mm) Dia. x 3.5" (87.5 mm) D
Color temp. (CCT)	4000 K, 5000 K
Distribution	Type VS
Lumen output	4,375 - 8,378
Warranty	10-yr Product & 2-yr On-site Labor/Service Warranty



NEW PRODUCT

Contractor Essentials EDG Parking Garage Canopy



Dimensions LxWxH	13.8" x 13.8" x 2.6" (350 x 350 x 65 mm)
Color temp. (CCT)	4000 K, 5000 K
Wattage	45 W, 70 W
Lumen output	5,483 - 8,618
Warranty	5-yr Product & 2-yr On-site Labor/Service Warranty



Contractor Essentials CPLED Garage



Dimensions LxWxH	CPLED-5 & CPLED-7: 9.5" x 9.5" x 4.3" (241 x 241 x 109 mm) CPLED-13: 11.8" x 11.8" x 4.5" (241 x 241 x 114 mm)
Color temp. (CCT)	4000 K, 5000 K
Wattage	40 W, 56 W, 102 W
Lumen output	4,943 - 12,708
Warranty	5-yr Product & 2-yr On-site Labor/Service Warranty



Contractor Essentials SLVT Premium Linear Vapor Tights



Dimensions LxWxH	2-ft: 26" x 5.0" x 3.1" (660.5 x 126 x 78 mm) 4-ft: 47.4" x 5.0" x 3.1" (1204 x 126 x 78 mm)
Color temp. (CCT)	3000 K, 4000 K, 5000 K
Wattage	25 W (2-ft), 35 W, 55 W, 75 W (4-ft)
Lumen output	3,115 - 10,035
Warranty	5-yr Product & 2-yr On-site Labor/Service Warranty



AREA LIGHTING

Exterior Lighting Fixtures

Optimus 2

Optimus 2 LED pole mount lights feature a full selection of optics, mounting options, and outputs, making it flexible enough to suit any outdoor lighting need. Ideal for schools, offices, retail, fuel stations, and parking lots, Optimus 2 is designed for high-performance, durability, and fast, easy installation and connection

Optimus, Small, 60 - 100 W

Dimensions L x W x H	13.90" x 13.46" x 3.27" (353 x 342 x 83 mm)
Color temp. (CCT)	3000 K*, 4000 K, 5000 K
Distribution	Type II, III, IV, V
Lumen output	9,776.5 - 14,167
Warranty	5-yr Product & 2-yr On-site Labor/Service Warranty



* Available by special order, please contact SloanLED for lead times.

Optimus, Medium, 150-200 W

Dimensions L x W x H	18.30" x 13.46" x 3.27" (465 x 342 x 83 mm)
Color temp. (CCT)	3000 K*, 4000 K, 5000 K
Distribution	Type II, III, IV, V
Lumen output	21,323.5 - 29,989.8
Warranty	5-yr Product & 2-yr On-site Labor/Service Warranty



Optimus, Large, 300 W

Dimensions L x W x H	22.44" x 14.57" x 3.54" (570 x 370 x 90 mm)
Color temp. (CCT)	3000 K*, 4000 K, 5000 K
Distribution	Type II, III, IV, V
Lumen output	41,582.7
Warranty	5-yr Product & 2-yr On-site Labor/Service Warranty



Symphony Post Top Light

NEW PRODUCT

Dimensions	17.8" (450 mm) Dia. x 20.0" (509 mm) H
Color temp. (CCT)	3000 K, 4000 K, 5000 K
Distribution	Type II and Type V
Lumen output	2,826 - 9,147
Warranty	10-yr Product & 2-yr On-site Labor/Service Warranty



Twilight

Dimensions	17.8" (450 mm) Dia. x 20.0" (509 mm) H
Color temp. (CCT)	3000 K*, 4000 K, 5000 K
Beam optics	Non-standard Type II and Type V
Lumen output	2,826 - 9,147
Warranty	5-yr Product & 2-yr On-site Labor/Service Warranty



AREA LIGHTING

Exterior Lighting Fixtures

For more information,
visit SloanLED.com



NEW PRODUCT

GRPL Bollards



Dimensions L x W x H	5.74" (145.8 mm) Dia. x 42" (1067 mm) H
Color temp. (CCT)	3000 K, 4000 K, 5000 K
Distribution	Type V
Lumen output	706 - 3,410
Warranty	5-yr Product & 2-yr On-site Labor/Service Warranty



NEW PRODUCT

Symphony Bollards



Dimensions L x W x H	SYM-BF/BL: 5.74" (146 mm) Dia. x 42" (1067 mm) H SYM-BT: 13" (330 mm) Dia. x 41.8" (1062 mm) H
Color temp. (CCT)	3000 K, 4000 K, 5000 K
Distribution	Type V
Lumen output	1,231 - 3,412
Warranty	10-yr Product & 2-yr On-site Labor/Service Warranty



Relax, we've got you covered.



In addition to our industry-leading 5 and 10-year product warranties, all SloanLED Lighting Systems products are protected by our **Performance+ Service Warranty**. In the event of a product failure, email service@sloanled.com and our team will have you up and running — replacing or repairing the item on-site!

POLE SOLUTIONS

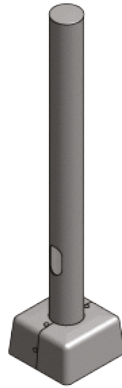
Light pole and bracket mounting solutions

SloanLED offers steel and aluminum light pole and bracket mounting solutions in a variety of heights, styles, configurations, and colors for total flexibility in any outdoor lighting design. Our light poles and brackets are fully industry-qualified and deliver the durability and reliability you've come to expect from SloanLED.

- Single source for warranty concerns
- Designed to meet AASHTO requirements
- Professional engineering stamped (P.E.)
- In-house technical consultation available



Square Straight Poles
10' - 39'



Round Straight Poles
8' - 30'



Round Tapered Poles
20' - 60'



Square Straight Hinged Steel Poles
20' - 60'



Decorative Poles
8' - 20'

Options



CM
Camera mounting options



WC
Welded coupling



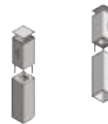
WB
Welded bracket



WN
Welded nipple



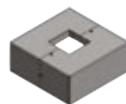
CMB
Mounting bracket



PTA
Universal fixture mount



CMP
Mounting plate



CSBC
Custom steel base cover



GFCI
Ground fault circuit interrupter



VD
Vibration dampener

Accessories



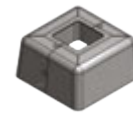
BAC
Breakaway couplings



PTTA
Pole top tenon adapters



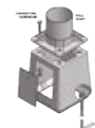
POLECAP
Pole caps



ABS-BC
ABS base covers



LW
Lowering winch



TB
Transformer bases



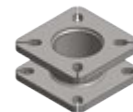
LW-ELECTRIC
Electric lowering winch



FH
Flag holder



BA
Banner arm



TTAP
Two-tier adapter plate

WALL MOUNT

Exterior Lighting Fixtures

For more information,
visit SloanLED.com



NEW PRODUCT

Symphony Wall Mount Luminaire, Wedge



Dimensions L x W x H 16.5" x 9.25" x 7.1" (420 x 235 x 180)

Color temp. (CCT) 3000 K, 4000 K, 5000 K

Distribution Forward throw, Wide throw, Down light / Up light

Lumen output 3,152 - 7,073

Warranty 10-yr Product & 2-yr On-site Labor/Service Warranty



NEW PRODUCT

Symphony Wall Mount Luminaire, Quarter Sphere



Dimensions L x W x H 18.1" x 9.05" x 9.05" (460 x 230 x 230)

Color temp. (CCT) 3000 K, 4000 K, 5000 K

Distribution Forward throw, Wide throw, Down light / Up light

Lumen output 3,197 - 7,123

Warranty 10-yr Product & 2-yr On-site Labor/Service Warranty



NEW PRODUCT

Symphony Wall Mount Luminaire, Half Moon



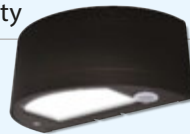
Dimensions L x W x H 18.1" x 9.25" x 7.1" (460 x 235 x 180)

Color temp. (CCT) 3000 K, 4000 K, 5000 K

Distribution Forward throw, Wide throw, Down light / Up light

Lumen output 3,197 - 7,123

Warranty 10-yr Product & 2-yr On-site Labor/Service Warranty



NEW PRODUCT

Symphony Wall Mount Luminaire, Up/Down Half Moon



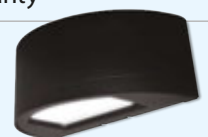
Dimensions L x W x H 18.1" x 9.25" x 7.1" (460 x 235 x 180)

Color temp. (CCT) 3000 K, 4000 K, 5000 K

Distribution Forward throw, Wide throw, Down light / Up light

Lumen output 5,948

Warranty 10-yr Product & 2-yr On-site Labor/Service Warranty



WALL MOUNT

Exterior Lighting Fixtures

Contractor Essentials LEDWPA Wall Packs, 25-40 W



Dimensions L x W x H	60 W: 8.875" x 9.125" x 5.1875" (225 x 232 x 132 mm) 25 W & 40 W: 5.375" x 9.125" x 5.1875" (137 x 232 x 132 mm)
Color temp. (CCT)	4000 K, 5000 K
Distribution	Adjustable
Lumen output	3,280 - 7,854
Warranty	5-yr Product & 2-yr On-site Labor/Service Warranty



Contractor Essentials LEDWPA Wall Packs, 60 W



Dimensions L x W x H	60 W: 8.875" x 9.125" x 5.1875" (225 x 232 x 132 mm) 25 W & 40 W: 5.375" x 9.125" x 5.1875" (137 x 232 x 132 mm)
Color temp. (CCT)	4000 K, 5000 K
Distribution	Adjustable
Lumen output	3,280 - 7,854
Warranty	5-yr Product & 2-yr On-site Labor/Service Warranty



Contractor Essentials WPA Wall Packs



Dimensions L x W x H	8.0" x 6.5" x 3.875" (203 x 165 x 98 mm)
Color temp. (CCT)	4000 K, 5000 K
Distribution	Adjustable
Lumen output	2,680 (23 W), 4,234 (37 W)
Warranty	5-yr Product & 2-yr On-site Labor/Service Warranty



Relax, we've got you covered.



In addition to our industry-leading 5 and 10-year product warranties, all SloanLED Lighting Systems products are protected by our **Performance+ Service Warranty**. In the event of a product failure, email service@sloanled.com and our team will have you up and running – replacing or repairing the item on-site!



Detroit

Dimensions L x W x H	45 W: 5.40" x 14.00" x 6.25" (137 x 356 x 159 mm) 70 W: 4.80" x 14.00" x 7.80" (121 x 356 x 198 mm) 100 & 150 W: 8.90" x 14.60" x 7.8" (227 x 370 x 198 mm)
Color temp. (CCT)	3000 K*, 4000 K, 5000 K
Distribution	Forward throw
Lumen output	5,450 - 16,686
Warranty	5-yr Product & 2-yr On-site Labor/Service Warranty



Portland

Dimensions L x W x H	5" x 14" x 8" (125 x 355 x 207 mm)
Color temp. (CCT)	3000 K*, 4000 K, 5000 K
Distribution	Forward throw
Lumen output	5,946 (45 W), 8,463 (70 W)
Warranty	5-yr Product & 2-yr On-site Labor/Service Warranty



FLOOD LIGHTING

Exterior Lighting Fixtures

For more information, visit SloanLED.com



100 & 150 W
Shown with optional slip-fitter mount

70 W
Shown with optional knuckle mount

200 & 240 W
Shown with optional slip-fitter mount

Symphony Floodlights

Symphony Series lighting fixtures from SloanLED work in concert bringing harmony and balance to any lighting project! Delivering up to 134 lumens per watt, Symphony Floodlights are available in five different wattages and feature rugged, die-cast construction, protecting your investment from the elements and potential abuse, while offering a clean, modern aesthetic.

NEW PRODUCT

Symphony Floodlights, Medium 70 W

Dimensions L x W x H 3.7" x 11" x 7.6" (94 x 279 x 193)

Color temp. (CCT) 4000 K, 5000 K

Distribution 5X4, 5X5, 7X6

Lumen output 9,200

Warranty 10-yr Product & 2-yr On-site Labor/Service Warranty



NEW PRODUCT

Symphony Floodlights, X-Large 200 & 240 W

Dimensions L x W x H 5.6" x 18.8" x 13.3" (142 x 478 x 338)

Color temp. (CCT) 3000 K, 4000 K, 5000 K

Distribution 5X4, 5X5, 7X6

Lumen output 27,400 - 29,500

Warranty 10-yr Product & 2-yr On-site Labor/Service Warranty



NEW PRODUCT

Symphony Floodlights, Large 100 & 150 W

Dimensions L x W x H 4.9" x 14.4" x 10" (125 x 366 x 254)

Color temp. (CCT) 4000 K, 5000 K

Distribution 5X4, 5X5, 7X6

Lumen output 12,900 - 20,000

Warranty 10-yr Product & 2-yr On-site Labor/Service Warranty



Solarta

Dimensions L x W x H 16.5" x 9.25" x 7.1" (420 x 235 x 180)

Color temp. (CCT) 4000 K, 5000 K

Distribution WT

Lumen output 5,670 - 26,040

Warranty 5-yr Product & 2-yr On-site Labor/Service Warranty



Relax, we've got you covered.



In addition to our industry-leading 5 and 10-year product warranties, all SloanLED Lighting Systems products are protected by our **Performance+ Service Warranty**. In the event of a product failure, email service@sloanled.com and our team will have you up and running – replacing or repairing the item on-site!



BORDER TUBE, COVE, & FACZIA

Exterior Lighting Fixtures

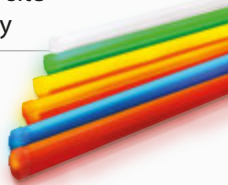
Border tubing and accent LED lighting allows for creative sign solutions. SloanLED proudly offers three LED tubing solutions to fit your application. We bring more than 20 years of experience in designing and manufacturing high performance, reliable, long-lasting LED border tube products. Successful brands, who mean business, choose SloanLED.

ColorLINE

Dimensions L x W x H 2', 4', 6' & 8' x 0.44" x 1.00"
(0.6, 1.2, 1.8, & 2.4 m x 11 mm x 25 mm)

Colors Red, Orange, Yellow, Green, Blue, White (6500 K), Warm White (3500 K). Colors retain hue when non-illuminated.

Warranty 5-yr Product & 2-yr On-site Labor/Service Warranty

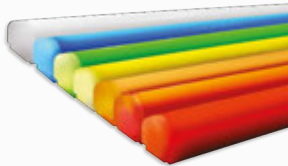


LEDStripe

Dimensions L x W x H 1', 2', 4', 6', 8', & 10' x 1.0" x 1.68"
(0.3', 0.6, 1.2, 1.8, 2.4, & 3.0 m x 25 mm x 43 mm)

Colors Red, Orange, Amber, True Yellow, Green, Blue, White, Lemon Yellow†

Warranty 5-yr Product & 2-yr On-site Labor/Service Warranty



* U.S. & Canada only.

† Lemon Yellow illuminates lighter than its daytime color. Lemon Yellow daytime color is Amber.

SloanLED LEDBlade

NEW PRODUCT

Dimensions L x W x H 58.6" x 1.0" x 1.0" (1.5 m x 25 mm x 25 mm)

Color temp. (CCT) 6500 K

Distribution Asymmetric

Lumen output 3,118 per assembly

Warranty 10-yr Product & 5-yr Labor

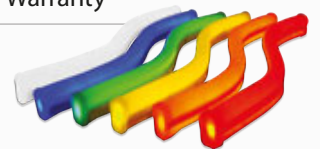


FlexiBRITE

Dimensions L x W x H 2' & 10' x 0.6" x 1.0"
(0.6 & 3.0 m x 15 mm x 25 mm)

Colors Ruby Red, Citrus Orange, Noviol Gold, Emerald Green, Bromo Blue, Snow White. Colors retain hue when non-illuminated.

Warranty 5-yr Product & 2-yr On-site Labor/Service Warranty



HighLINER 3

NEW PRODUCT

Dimensions L x W x H 1', 2', 4', 6', & 8' x 2.38" x 1.03" (0.3, 0.6, 1.2, 1.8, 2.4 m x 60 mm x 26 mm)

Color temp. (CCT)† 3500 K, 5000 K

Distribution Linear

Lumen output 5,670 - 26,040

Warranty 10-yr Product



† Contact SloanLED Sales for additional CCT options.

INTERIOR RECESSED/SURFACE

Interior Lighting Fixtures

For more information,
visit SloanLED.com



Contractor Essentials FP20 Premium Backlit Panels



Dimensions LxWxH	1' x 4': 47.75" x 11.875" x 2.25" (1213 x 302 x 57 mm) 2' x 2': 23.75" x 23.75" x 2.25" (603 x 603 x 57 mm) 2' x 4': 47.75" x 23.75" x 2.25" (1213 x 603 x 57 mm)
-------------------------	---

Color temp. (CCT) 3500 K, 4000 K, 5000 K

Wattage 1' x 4': 32 W, 2' x 2': 32 W, 2' x 4': 40 & 55 W

Lumen output 4,124 - 7,442

Warranty 5-yr Product & 2-yr On-site Labor/Service Warranty

Contractor Essentials PNL Standard Backlit Panels



Dimensions LxWxH	2' x 2': 23.75" x 23.75" x 2.25" (603 x 603 x 57 mm) 2' x 4': 47.75" x 23.75" x 2.25" (1213 x 603 x 57 mm)
-------------------------	---

Color temp. (CCT) 3500 K, 4000 K, 5000 K

Wattage 2' x 2': 36 W, 2' x 4': 44 W

Lumen output 4,259 - 5,323

Warranty 5-yr Product & 2-yr On-site Labor/Service Warranty



Contractor Essentials CB Troffers



Dimensions LxWxH	2' x 2': 23.75" x 23.75" x 2.75" (603 x 603 x 70 mm) 2' x 4': 47.75" x 23.75" x 2.75" (1213 x 603 x 70 mm)
-------------------------	---

Color temp. (CCT) 3500 K, 4000 K, 5000 K

Wattage 24 W (2' x 2'), 33 W (2' x 4')

Lumen output 3,096 - 4,605

Warranty 5-yr Product & 2-yr On-site Labor/Service Warranty



Daybreak

Dimensions LxWxH	2' x 2': 23.82" x 23.82" x 3.94" (605 x 605 x 100 mm) 2' x 4': 47.72" x 23.82" x 3.94" (1212 x 605 x 100 mm)
-------------------------	---

Color temp. (CCT) 3500 K, 4000 K, 5000 K

Wattage 2' x 2': 38 W, 2' x 4': 39 & 62 W

Lumen output 4,441 - 7,068

Warranty 5-yr Product & 2-yr On-site Labor/Service Warranty



INTERIOR RECESSED/SURFACE

Interior Lighting Fixtures

Contractor Essentials BWALED Utility Wrap



Dimensions LxWxH 48" x 7" x 2.75" (1219 x 178 x 70 mm)

Color temp. (CCT) 3500 K, 4000 K, 5000 K

Wattage 40 W

Lumen output 4,771 - 5,240

Warranty 5-yr Product & 2-yr On-site Labor/Service Warranty



Contractor Essentials SL Strip Lights



Dimensions LxWxH 2', 3', 4', & 8' x 3.3" x 3.6"
(0.6, 0.9, 1.2, & 2.4 m x 84 mm x 91 mm)

Color temp. (CCT) 4000 K, 5000 K

Wattage 20 W (2' [0.6 m]), 25 W (3' [0.9 m]),
35 W (4' [1.2 m]), 65 W (8' [2.4 m])

Lumen output 2,540 - 8,765

Warranty 5-yr Product & 2-yr On-site Labor/Service Warranty



HighLINER 3

HighLINER 3 is a versatile product for canopies, soffits, awnings, and wall washes, that offers natural, white, outdoor and indoor linear illumination for both new construction and retrofit projects, while saving energy, and reducing maintenance costs, for a brilliant bottom line.



Contractor Essentials WLE Economy Wraps



Dimensions LxWxH 47.6" x 3.7" x 3" (1209 x 94 x 76 mm)

Color temp. (CCT) 3000 K, 4000 K, 5000 K

Wattage 35 W

Lumen output 4,034 - 4,203

Warranty 5-yr Product & 2-yr On-site Labor/Service Warranty



Contractor Essentials SLVT Premium Linear Vapor Tights



Dimensions LxWxH 2' & 4' x 3.1" x 5.0"
(660.5 & 1204 m x 78 mm x 126 mm)

Color temp. (CCT) 3000 K, 4000 K, 5000 K

Wattage 25 W (2' [0.6 m]); 35, 55, & 75 W (4' [1.2 m])

Lumen output 3,115 - 10,035

Warranty 5-yr Product & 2-yr On-site Labor/Service Warranty



NEW PRODUCT

HighLINER 3

Dimensions LxWxH 1', 2', 4', 6', & 8' x 2.38" x 1.03" (0.3, 0.6, 1.2,
1.8, 2.4 m x 60 mm x 26 mm)

Color temp. (CCT)* 3500 K, 5000 K

Distribution Linear

Lumen output 5,670 - 26,040

Warranty 10-yr Product



* Contact SloanLED Sales for additional CCT options.

OPEN CEILING

Interior Lighting Fixtures

For more information,
visit SloanLED.com



Achieve Round High Bay



Dimensions LxWxH	15" x 14" x 14.6" (380 x 356 x 371 mm)
Color temp. (CCT)	4000 K, 5000 K
CRI	>80
Lumen output	12,359 - 29,410
Warranty	10-yr Product & 2-yr On-site Labor/Service Warranty



Contractor Essentials LEDHBR Round High Bays



Dimensions LxWxH	15" x 15" x 8" (381 x 381 x 203 mm)
Color temp. (CCT)	4000 K, 5000 K
CRI	>80
Lumen output	13,950 - 32,727
Warranty	5-yr Product & 2-yr On-site Labor/Service Warranty



Contractor Essentials HBRE Round High Bays



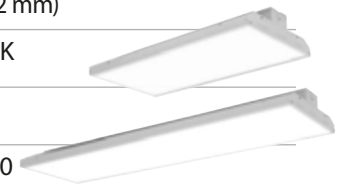
Dimensions LxWxH	14L & 21L: 11.7" Dia. x 7.3" (297 mm Dia. x 185 mm) 28L & 34L: 14.2" Dia. x 8.5" (361 mm Dia. x 216 mm)
Color temp. (CCT)	4000 K, 5000 K
CRI	>=80
Lumen output	14,497 - 34,240
Warranty	5-yr Product & 2-yr On-site Labor/Service Warranty



Contractor Essentials SHL2 Linear High Bays



Dimensions LxWxH	90, 135 & 180 W: 23.75" x 12.625" x 3.625" (603 x 321 x 92 mm) 265 & 320 W: 45.875" x 12.625" x 3.625" (1165 x 321 x 92 mm)
Color temp. (CCT)	4000 K, 5000 K
CRI	>80
Lumen output	12,193 - 44,460
Warranty	5-yr Product & 2-yr On-site Labor/Service Warranty



REFRIGERATED DISPLAY

Retail Lighting Fixtures

Refrigerated Display

Cold Series™ refrigerated display LED lighting systems use cutting edge LED technology to combine efficiency, performance, and value for state of the art merchandising.

Cold Door 4 French Doors

Color temp. (CCT) 3500 K, 4000 K, 5000 K

CRI >80

Lumen output 1,140 - 3,468

Warranty 5-yr Product & 2-yr On-site Labor/Service Warranty



Status pending

Cold Door 4 ECO

Color temp. (CCT) 3500 K, 4000 K, 5000 K

CRI >80

Lumen output 600 - 1,616

Warranty 5-yr Product & 2-yr On-site Labor/Service Warranty



Status pending

Cold Door 4 Performance

Color temp. (CCT) 3500 K, 4000 K, 5000 K

CRI >80

Lumen output 840 - 2,555

Warranty 5-yr Product & 2-yr On-site Labor/Service Warranty



Status pending

Dimensions L x W x H

**Cold Door 4 ECO,
French Door &
Performance**

Center: 4', 5', 6', & 7' x 1.5" x 0.72"

(1.2, 1.5, 1.7, & 1.8 m x 38.1 mm x 18.3 mm)

End: 4', 5', 6', & 7' x 0.91" x 0.72"

(1.2, 1.5, 1.7, & 1.8 m x 23.1 mm x 18.3 mm)



Cold Deck FIT

Dimensions L x W x H

Canopy: 1', 3', 4' x 1.75" x 1.15"

(0.3, 0.9, 1.2 m x 44 x 29 mm)

Shelf: 1', 3', 4' x 1.75" x 0.80"

(0.3, 0.9, 1.2 m x 44 x 20 mm)

Color temp. (CCT)

2700 K, 3500 K, 4000 K, Prime (meat-tuned)*

CRI

>80

Lumen output

Canopy: 241 - 1380

Shelf: 137 - 797

Warranty

5-yr Product & 2-yr On-site Labor/Service Warranty



SIGN CABINET / BOX

Sign Lighting Products

For more information,
visit SloanLED.com



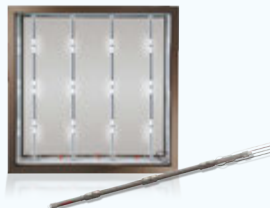
Sign Cabinet/Box Lighting Solutions

SloanLED offers brilliant sign lighting solutions for single and double-sided, narrow to large, new and retrofit, box and cloud signs. Our products are designed and engineered with sign makers in mind, to provide bright, even illumination, incredible ROI, and fast, easy installation. We spend our time inside the box, to provide lighting solutions that go beyond the box to brighten your bottom line.

Single or double sided sign boxes

SloanLED PrismBEAM²⁴

- Available in all standard lamp sizes
- Easy installation using existing sockets, requiring no connectors or adapters
- Uniform illumination at 5-8" (127-203 mm) optimum, up to 16" (406 mm) maximum from face



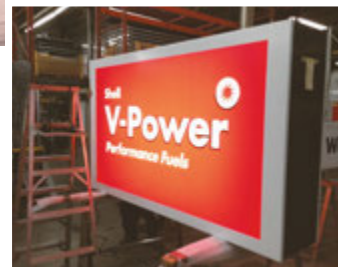
SignBOX 3

- Available in Strapped (single and double-sided) and Module (single-sided) options
- Engineered to deliver bright, uniform illumination in new or retrofit sign cabinets
- Secures to existing fluorescent wireways or sign structure and features flexible straps for easy transportation and installation



SloanLED BrightLINE

- Ideal for single-sided, fabric-face light boxes 1.2 - 4.7" (30 - 120 mm) deep
- Fast, easy installation with no soldering or plugging individual boards together
- Long and Short lengths available for ease of installation



Shallow/narrow cabinets

PosterBOX Slim 2

- Optimal for single and double-sided sign cabinets as shallow as 2" (50 mm), such as: Indoor textile prints and movie posters
- Excellent white light intensity and uniformity



PosterBOX 3

- Bright, even illumination in large cabinets with depths as shallow as 3" (75 mm) for single-sided applications, 4" (100 mm) for double-sided applications, and up to 10 ft (3 m) in height
- Built-in module spacer eliminates measuring, yielding perfect results every time



PosterBOX ID

- Illuminate box widths up to 10 ft (3 m) by placing product on opposing sides of display
- Top-tier LED chips and high-performance optics



PosterBOX Mini

- Cost effective, edge-lit cabinet lighting solution for applications as shallow as 2" (50 mm) deep
- Innovative design and adjustable spacing make installation easy for a variety of light boxes of different depths and shapes



CHANNEL LETTER

Sign Lighting Products

Channel Letter Lighting Solutions

SloanLED channel letter LED lighting products are designed for the whole spectrum of channel letter applications, including face and halo lit, shallow to deep can depths, and routed acrylic letters.

Extraordinary solutions are built on bright choices

SloanLED provides more than just lighting products. We're your trusted partner, providing high-efficiency, long lasting light solutions that represent significant energy and maintenance cost savings, easy installation, faster ROI, and exceptional performance with consistent brightness and uniformity, which is what makes SloanLED the bright choice.



VALUE

VL4
Everyday channel letter lighting solutions

12 VDC

MODS/FT(M)	COLORS	LUMENS/ MOD	EFFICACY
VL4 Mini Small channel letters			
2.5/ft (8.2/m)	White (6500 K, 5000 K, 3000 K)	40	111 lm/W
VL4 Standard channel letters			
1.4/ft (4.6/m)	White (7200 K, 6500 K), Red, Green, and Blue	Up to 107	Up to 111 lm/W
VL4 HO Large channel letters			
1.5/ft (4.9/m)	White (6500 K)	130	108 lm/W

VL4 Super HO

Everyday 24 VDC LED lighting solution for large, deep channel letter and light box applications

PERFORMANCE

SloanLED Prism
High-performance 12 VDC channel letter lighting solutions

12 VDC

MODS/FT(M)	COLORS	LUMENS/ MOD	EFFICACY
SloanLED Prism Mini Small channel letters			
2.0/ft (6.6/m)	White (7100 K, 6500 K, 5000 K, 4000 K, 3000 K), Red, Green, and Blue	Up to 50	Up to 116 lm/W
SloanLED Prism Standard channel letters			
1.5/ft (4.9/m)	White (7100 K, 6500 K, 5000 K, 4000 K, 3000 K), Red, Orange, Yellow, Green, and Blue	Up to 124	Up to 111 lm/W

Also available:

SloanLED Prism Nano

Premium 12V LED lighting solution for block acrylic signs and small channel letters

PERFORMANCE+

SloanLED Prism²⁴
High-performance 24 VDC channel letter lighting solutions

24 VDC

MODS/FT(M)	COLORS	LUMENS/ MOD	EFFICACY
SloanLED Prism²⁴ Mini Small channel letters			
2.5/ft (8.2/m)	White (7100 K, 6500 K, 5000 K, 4000 K, 3000 K), Red, Green, and Blue	40	100 lm/W
SloanLED Prism²⁴ Standard channel letters			
1.2/ft (3.9/m)	White (7100 K, 6500 K, 5000 K, 4000 K, 3000 K), Red, Green, and Blue	Up to 138	Up to 160 lm/W
SloanLED Prism²⁴ HO Large channel letters			
0.8/ft (2.6/m)	White (6500 K, 5000 K)	180	150 lm/W

SloanLED Prism²⁴ LP

Premium 24V LED lighting solution for low-profile channel letters

We've got you covered.

As your trusted partner, SloanLED is committed to providing quality lighting solutions, superior technical and customer support, and industry-leading warranties, and our Performance+ Service Warranty, covering all SloanLED Lighting Systems products installed within the United States & Canada, takes this commitment to a new level!

Under the Performance+ Service Warranty, SloanLED will send our technician to your site, along with any required equipment and material, to resolve any SloanLED Lighting Systems product issue at no cost to you.

5 & 10-year product warranties, 2-year Performance+ Turnkey, Labor, Equipment, and Material Warranty, and the best global coverage in the industry – we've got your covered.



SloanLED Europe, B.V.
Zoetermeer, The Netherlands
EMEA ~ Asia Sales

SloanLED, Inc.
Ventura, CA
Company Headquarters

SloanLED Asia, Inc.
Guangdong Province, China
LED / Circuit Board Assembly
SloanLED Managed Contract
Manufacturing

 SloanLED coverage

SloanLED Headquarters
5725 Olivas Park Drive, Ventura, CA, USA
805.676.3200 • info@SloanLED.com

SloanLED Europe b.v.
Argonstraat 110, 2718 SN Zoetermeer, NL
+31 88 12 44 900 • europe@SloanLED.com

Perspex South Africa
087 097 0111
info@perspex.co.za
www.perspex.co.za

PERSPEX SOUTH AFRICA
Creatively inspired. Solutions driven



SloanLED.com

Specifications subject to change without notice.
© 2021 SloanLED Rev A 2021-09-16

 **SloanLED**[®]
Leaders in LED Technology