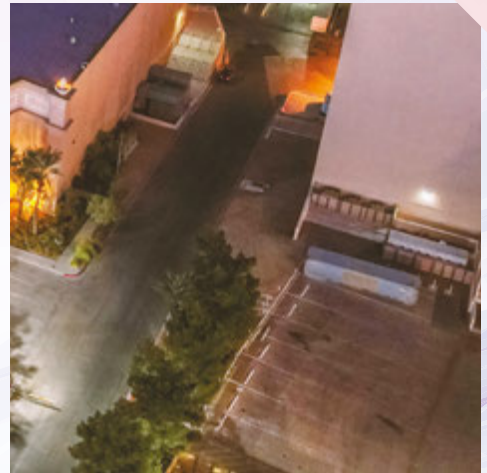


The **complete solution** for all your lighting needs.

Product Catalog

BORDER TUBING | CHANNEL LETTER | SIGN CABINET/BOX | LINEAR LIGHTING

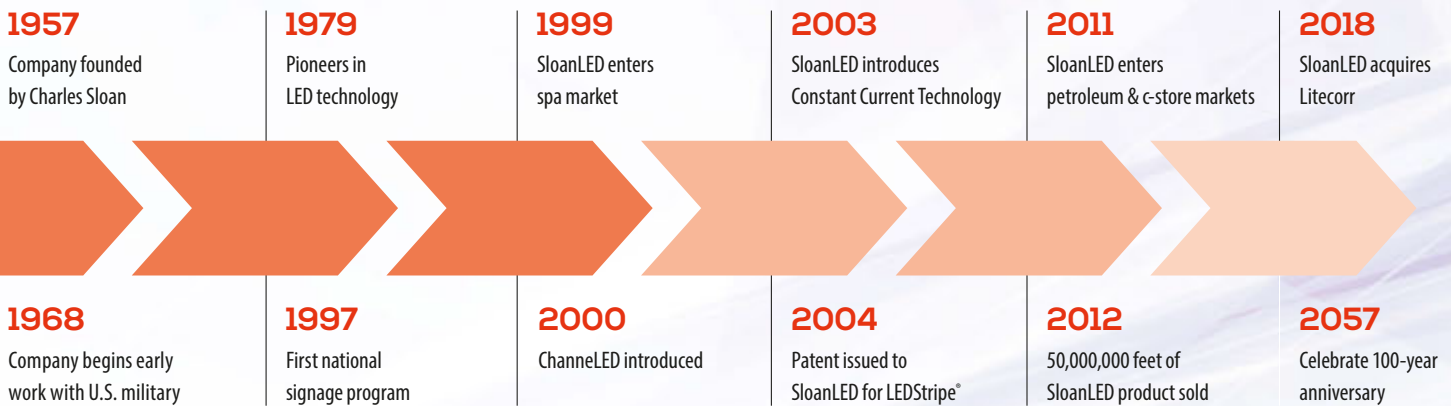


POWER SUPPLIES | OUTDOOR COMMERCIAL | INDOOR COMMERCIAL | REFRIGERATED DISPLAY

# Brightening Your Brands from the Beginning.

Founded in 1957 to design and develop high-reliability lighting products, SloanLED® quickly became a pioneer in LED technology. Our founder, Charles Sloan, was driven by two simple principles: employ the latest technologies to develop quality lighting products and take excellent care of our customers.

SloanLED has continued to deliver on these principles as a leading supplier of aircraft indicator lights for the last 60 years, and our commitment to producing safe, reliable, lighting solutions that withstand the elements and harshest weather conditions, keeps us at the forefront of the lighting market. Our high-efficiency, long lasting solutions don't just brighten your brands; they represent significant energy cost reductions, maintenance cost savings, easy installation, faster ROI, and deliver exceptional performance with consistent brightness and uniformity.



## Innovation

We design, test, and deliver comprehensive solutions that factor in total cost of ownership, maximum ROI, and a positive customer experience.

- Reliable, dependable products
- Lowest total cost of ownership
- Reduced maintenance costs
- Fast, easy installation

## Quality

We're a proven industry leader with more than 60 years experience producing safe, reliable lighting solutions.

- ISO 9001:2015 certification for quality management
- Superior product lifespans
- LM79 product testing
- Experienced and proven industry leader

## Reliability

We use only the highest caliber components for long lasting lighting solutions that deliver exceptional performance.

- Extreme environmental and product-life testing
- Virtually maintenance free
- Long life products, up to 100,000 hours

## Sustainability

Our lighting solutions represent significant energy cost reductions, easy installation, faster ROI, and unsurpassed value.

- Significant energy cost savings
- Recycled/recyclable packaging materials
- Mercury free illumination
- Standardized low-voltage systems

# Quick Reference Guide

## Border Tubing..... Pg. 4-5

Border tubing and accent LED lighting allows for creative sign solutions. SloanLED offers three LED tubing solutions to fit your application.

## Channel Letter .....Pg. 6-10

SloanLED channel letter LED lighting products are designed for a wide range of channel letter applications, including face and halo lit, shallow to deep can depths, and routed acrylic letters.

Product	Desired can depth									12/24 VDC
	25 mm	50 mm	75 mm	100 mm	125 mm	150 mm	178 mm	200 mm	228 mm+	
SloanLED Prism <sup>24</sup> , Prism <sup>24</sup> LP, and Prism	Optimal	Optimal	Optimal	Optimal	Optimal	Optimal	Optimal	Optimal	Acceptable	12/24 VDC
SloanLED Prism <sup>24</sup> Mini and Prism <sup>12</sup> Mini	Acceptable	Optimal	Optimal	Optimal	Optimal	Optimal	Optimal	Optimal	Acceptable	12/24 VDC
SloanLED Prism <sup>24</sup> HO	Optimal	Optimal	Optimal	Optimal	Optimal	Optimal	Optimal	Optimal	Optimal	12/24 VDC
SloanLED Prism <sup>12</sup> Nano+	Optimal	Optimal	Optimal	Optimal	Optimal	Optimal	Optimal	Optimal	Optimal	12 VDC
VL4	Optimal	Acceptable	Optimal	Optimal	Optimal	Optimal	Optimal	Optimal	Acceptable	12 VDC
VL4 Mini	Optimal	Optimal	Optimal	Optimal	Optimal	Optimal	Optimal	Optimal	Optimal	12 VDC
VL4 HO and VL4 Super HO	Optimal	Optimal	Optimal	Optimal	Optimal	Optimal	Optimal	Optimal	Optimal	12/24 VDC
BendLUX and SloanLED FlexTAPE	Optimal	Optimal	Optimal	Optimal	Optimal	Optimal	Optimal	Optimal	Optimal	12 VDC

## Sign Cabinet/Box.....Pg. 11-13

Sign cabinet/box LED lighting from SloanLED is designed for single and double sided and narrow to large box and cloud signs. It's easy to install and is a great solution for new and retrofit applications.

## Linear Lighting..... Pg. 14

Linear lighting is a great solution for illuminating cove, awning, and wall wash applications or to highlight non-illuminated signs.

## Power Supplies .....Pg. 15

SloanLED power supplies are engineered to last and are among the most rugged in their class.

## Outdoor Commercial ..... Pg. 16-20

SloanLED outdoor area LED lighting systems capture customer attention with consistent and bright illumination, in addition to providing sizeable energy savings over non-LED fixtures.

## Indoor Commercial..... Pg. 21-23

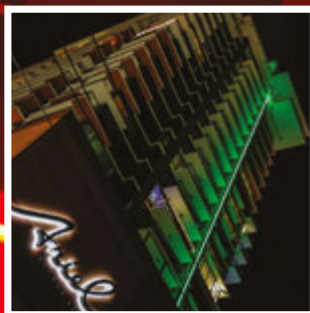
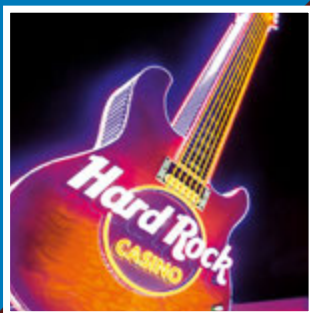
SloanLED indoor commercial LED lighting systems use cutting edge LED technology to combine class-leading efficiency, performance, and value to create aesthetically pleasing retail interiors.

## Refrigerated Display .....Pg. 24-25

SloanLED refrigerated display LED lighting systems use cutting edge LED technology to combine efficiency, performance, and value for state of the art merchandising.

# Border Tubing & Accent

Border tubing and accent LED lighting allows for creative sign solutions. SloanLED proudly offers three LED tubing solutions to fit your application. We bring more than 20 years of experience in designing and manufacturing high performance, reliable, long-lasting LED border tube products. Successful brands, who mean business, choose SloanLED.



## ColorLINE

Neon-inspired tubing

**12**  
VDC

Add stunning neon-like appeal and increased awareness to any building with this patented LED-based rigid tubing system. Completely assembled and sealed tubes are ready for installation. ColorLINE offers our brightest tubing light output, a neon-like profile, and innovative lit, mitered corners.

- Daytime color when non-illuminated
- Slim profile similar to standard neon
- High impact acrylic: UV stable, hydrocarbon insensitive, and non-fading
- Product can be cut to custom lengths in the field



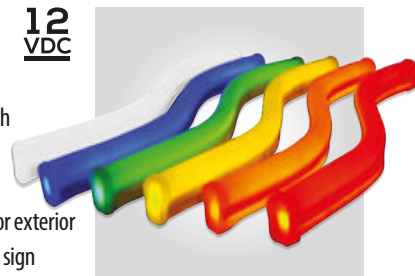
## FlexiBRITE

Flexible LED tubing

**12**  
VDC

Add a "neon look" to any LED-lit sign with FlexiBRITE field bendable LED tubing. Easily create an endless array of profiles, contours, and patterns on the fly. Ideal for exterior and interior lighting applications such as sign perimeters, letters, symbols, accent stripes, borders, and open-face channel letters.

- Colors retain hue in the daytime
- Optically modified silicone extrusion: UV stable, hydrocarbon insensitive, and non-fading
- Extremely flexible LED tubing
- Convenient mounting clips and mounting tracks



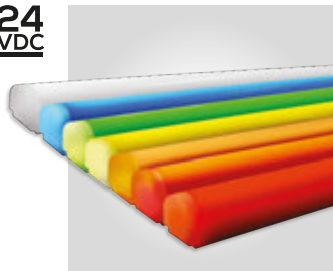
## LEDStripe

Large-profile LED tubing

**24**  
VDC

LEDStripe® LED-based rigid tubing system adds elegance and distinction to any building and has become the border tube system of choice for many retail, restaurant, and lodging chains.

- Daytime color when non-illuminated
- High impact acrylic: UV stable, hydrocarbon insensitive, and non-fading
- Product can be cut to custom lengths in the field



## SloanLED FlexTAPE

Flexible LED illumination for shallow signs and accents

**12**  
VDC

Low-profile, LED lighting solution that delivers flexibility and fast, easy installation in shallow channel letter and architectural accent applications.

- Available in White (6500 K, 5000 K, 3500 K) and Red
- Easy installation with peel-n-stick back
- Can be cut in 50 mm (2") segments for zero waste



Colors	Part number*	Lengths	Length code	Approx. cut increments	Power per m/ft	Protection class	Power capacity	Mounting
Red	701800D-R-X	0.6-m (2-ft) Tube	2	60 mm (2.4")	7.5 W / 2.28 W	IP66	7.3 m (24 ft) per 60 W 12 VDC power supply	Dual-position mounting clips (400381-25) orient in two directions
Orange	701800D-O-X							
Yellow	701800D-Y-X	1.2-m (4-ft) Tube	4					
Green	701800D-G-X							
Blue	701800D-B-X	1.8-m (6-ft) Tube	6					
White (6500 K)	701800-W-X	2.4-m (8-ft) Tube	8					
Warm White (3500 K)	701800A-WW-X							

FlexiBRITE								
Ruby Red	701499-R-X	0.6-m (2-ft)	2	50 mm (2")	9.2 W / 2.8 W	IP66	6 m (20 ft) per 60 W 12 VDC power supply	Mounting clips: (701572-25) Mounting track: (701456-10)
Citrus Orange	701499C-O-X							
Noviol Gold	701499C-Y-X	3.0-m (10-ft)	10	38 mm (1.5")				
Emerald Green	701499D-G-X							
Bromo Blue	701499D-B-X							
Snow White	701499D-W-X							

LEDStripe								
Red	701189-XH	0.3-m (1-ft) Tube <sup>†</sup>	1	75 mm (3")	5.0 W / 1.5 W (except 0.3-m [1-ft] piece at 3.0 W on average)	IP66	18.3 m (60 ft) per 100 W 24 VDC power supply	Round pre-mounting buttons: 701156 Slide and mount rectangle mounting buttons: 400775
Orange	701189-A-XD	0.6-m (2-ft) Tube	2					
Amber	701189-Y-XD	1.2-m (4-ft) Tube	4					
True Yellow	701189-YT-X	1.8-m (6-ft) Tube	6					
Green	701189D-G-XD	2.4-m (8-ft) Tube	8					
Blue	701189A-B-XD	3.0-m (10-ft) Tube	10					
White	701189E-W-X							
Lemon Yellow <sup>‡</sup>	701189E-WY-X							

#### ColorLINE Accessories

Joint and corner covers		
Snap-on, frosted joint covers (701807) for clean finish illuminated mitered corners:		
<b>Red, Orange, Yellow, Green, Blue</b>	Inside corner	701800D-IC-Color
	Outside corner	701800D-OC-Color
	Step corner	701800D-SC-Color
<b>White (6500 K)</b>	Inside corner	701800-IC-W
	Outside corner	701800-OC-W
	Step corner	701800-SC-W
<b>Warm White (3500 K)</b>	Inside corner	701800A-IC-WW
	Outside corner	701800A-OC-WW
	Step corner	701800A-SC-WW
Mounting		
Mounting clips	400381-25	

#### FlexiBRITE Accessories

Mounting	
Mounting clip	701572-25
Mounting track	701456-10

- \* "X" in part number denotes desired length. See length code column for length codes.
- † Lemon Yellow illuminates lighter than its daytime color. Lemon Yellow daytime color is Amber.
- ‡ Available in U.S. and Canada only.
- § "Unlit product color charts" provided as a courtesy to give a general idea of product color. Colors in chart not printed using Pantone inks and may vary from actual Pantone number/color. For an accurate representation of product color, a Pantone Color Guide book should be used, or order a sample part. For more information on Pantone, visit Pantone.com.

#### LEDStripe Accessories

Joint and corner covers		
Snap-on, colored joint and corner covers for clean finish	Joint	701361-Color
	Outside corner	701362-Color
	Inside corner	701363-Color
	Step corner	701364-Color
Cables and connectors		
Hook-up cable, 3.0-m (10-ft)	Connects LEDStripe to power supply	701158-120
Hook-up cable, 4.6-m (15-ft)		701158-180
Jumper kit	For routing around field-cut sections	701385
Y connector	Three-way connector for joining two sections to one	701160-3
Wiring pigtail, large connector	Male, outdoor-rated connector	701187
Wiring pigtail, small connector	Female, outdoor-rated connector	701188
Mounting		
Mounting button	Circular button for standard installation	701156
Mounting clip	Square clip with flanged end	400775
Acrylic end cap	For adjusting product length	400828-FC
Field end cap installation kit	Glue, PCB sealer, de-burr sandpaper, instructions	701491

#### Unlit product color charts<sup>§</sup>

##### ColorLINE

Red/ Ruby Red	Orange/ Citrus Orange	Yellow/ Noviol Gold
PANTONE 485 C	PANTONE 151 C	PANTONE 3975 C
Green Emerald Green	Blue/ Bromo Blue	
PANTONE 355 C	PANTONE 2935 C	

##### FlexiBRITE

Ruby Red	Citrus Orange	Noviol Gold
PANTONE 179 C	PANTONE 1655 C	PANTONE 3955 C
Emerald Green	Bromo Blue	
PANTONE 2242 C	PANTONE 2184 C	

##### LEDStripe

Red	Orange	Amber	True Yellow
PANTONE 1797 C	PANTONE 1665 C	PANTONE 2012 C	PANTONE 7405 C
Green	Blue	Lemon Yellow	
PANTONE 355 C	PANTONE 2935 C	PANTONE 138 C	

# Channel Letter

SloanLED channel letter LED lighting products are designed for the whole spectrum of channel letter applications, including face and halo lit, shallow to deep can depths, and routed acrylic letters.

## Extraordinary solutions are built on bright choices

SloanLED provides more than just lighting products. We're your trusted partner, providing high-efficiency, long lasting light solutions that represent significant energy and maintenance cost savings, easy installation, faster ROI, and exceptional performance with consistent brightness and uniformity, which is what makes SloanLED the bright choice.



### Small channel letters

Channel letter applications 50-100 mm (2-4") deep

### Standard channel letters

Channel letter applications 75-200 mm (3-8") deep

### Large channel letters

Channel letter and sign box applications 127-305 mm (5-8") deep

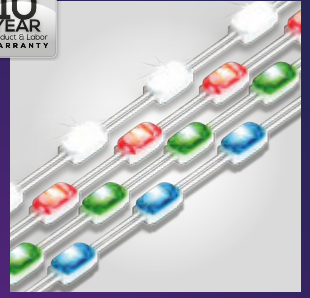


# SloanLED Prism<sup>12</sup> Nano+



Premium 12V LED lighting solution for block acrylic signs and small channel letters

- Available in White (7200 K, 6500 K, 5000 K, 4000 K, 3000 K), Red, Green, and Blue
- Designed for applications as shallow as 1" (25 mm)
- More modules per power supply up from 150 to an unprecedented 250 white modules on a 60 W power supply
- Efficacy of up to 160 lm/W making SloanLED Prism<sup>12</sup> Nano+ the class-leading solution over competing 12 & 24 V products
- New 22 AWG cable for greater safety and reduced voltage drop



**12**  
VDC

## VALUE




**VL4**  
Everyday channel letter lighting solutions

**12**  
VDC

MODS/M(FT)	COLORS	LUMENS/MOD	EFFICACY
<b>VL4 Mini</b>			
8.2/m (2.5/ft)	White (6500 K, 5000 K, 3000 K)	40	111 lm/W
<b>VL4</b>			
4.6/m (1.4/ft)	White (7200 K, 6500 K, 4000 K), Red, Green, and Blue	Up to 107	Up to 111 lm/W
<b>VL4 HO</b>			
4.9/m (1.5/ft)	White (6500 K)	130	108 lm/W

## PERFORMANCE



**SloanLED Prism**  
High-performance 12 VDC channel letter lighting solutions

**12**  
VDC

MODS/M(FT)	COLORS	LUMENS/MOD	EFFICACY
<b>SloanLED Prism<sup>12</sup> Mini</b>			
6.6/m (2.0/ft)	White (7100 K, 6500 K, 5000 K, 4000 K, 3000 K), Red, Green, and Blue	Up to 50	Up to 132 lm/W
<b>SloanLED Prism</b>			
4.9/m (1.5/ft)	White (7100 K, 6500 K, 5000 K, 4000 K, 3000 K), Red, Orange, Yellow, Green, and Blue	Up to 124	Up to 111 lm/W

## PERFORMANCE+



**SloanLED Prism<sup>24</sup>**  
High-performance 24 VDC channel letter lighting solutions

**24**  
VDC

MODS/M(FT)	COLORS	LUMENS/MOD	EFFICACY
<b>SloanLED Prism<sup>24</sup> Mini</b>			
8.2/m (2.5/ft)	White (7100 K, 6500 K, 5000 K, 4000 K, 3000 K), Red, Green, and Blue	40	100 lm/W
<b>SloanLED Prism<sup>24</sup></b>			
Whites 3.9/m (1.2/ft) Red 4.9/m (1.5/ft)	White (7100 K, 6500 K, 5000 K, 4000 K, 3000 K), Red, Green, and Blue	Up to 138	Up to 160 lm/W
<b>SloanLED Prism<sup>24</sup> HO</b>			
2.6/m (0.8/ft)	White (6500 K, 5000 K)	180	150 lm/W

## PERFORMANCE+

High-performance 24 VDC channel letter lighting solutions

Modules per m/ft	Description	Part number	Optimal can depth	Power / module	Lumens / module	Efficacy	Protection class	Power capacity	Packaging
<b>SloanLED Prism<sup>24</sup></b>									
3.9/m (1.2/ft)	White 7100 K	701269-7W24SJ1-MB	75-200 mm (3-8")	0.86 W	138	160 lm/W	IP66 & 68*	104 modules (26.4 m / 86.7 ft) per 100 W 24 VDC power supply	13.2 m / 43.3 ft (52 modules) per bag
	White 6500 K	701269-6W24SJ1-MB							
	White 5000 K	701269-5W24SJ1-MB							
	White 4000 K	701269-4W24SJ1-MB							
	White 3000 K	701269-3W24SJ1-MB							
<b>SloanLED Prism<sup>24</sup> Colors</b>									
4.9/m (1.5/ft)	Red (623 nm)	701269-RD24SJ1-MB	75-200 mm (3-8")	0.43 W	26	60 lm/W	IP66 & 68*	208 modules (42.3 m / 138.7 ft) per 100 W 24 VDC power supply	10.6 m / 34.7 ft (52 modules) per bag
	Green (527 nm)	701269-GR24SJ1-MB		0.54 W	59	109 lm/W		167 modules (33.9 m / 111.3 ft) per 100 W 24 VDC power supply	
	Blue (468 nm)	701269-BL24SJ1-MB		0.59 W	18	31 lm/W		152 modules (30.9 m / 101.3 ft) per 100 W 24 VDC power supply	
<b>SloanLED Prism<sup>24</sup> High Output</b>									
2.6/m (0.8/ft)	White 6500 K	701269-6W24HJ3-MB	127-305 mm (5-12")	1.20 W	180	150 lm/W	IP66 & 68*	75 modules (28.5 m / 93.8 ft) per 100 W 24 VDC power supply	14.5 m / 47.5 ft (38 modules) per bag
	White 5000 K	701269-5W24HJ3-MB							
<b>SloanLED Prism<sup>24</sup> Mini Whites</b>									
8.2/m (2.5/ft)	White 7100 K	701269-7W24MJ1-MB	50-100 mm (2-4")	0.40 W	40	100 lm/W	IP66 & 68*	225 modules (27.4 m / 90.0 ft) per 100 W 24 VDC power supply	9.1 m / 30.0 ft (75 modules) per bag
	White 6500 K	701269-6W24MJ1-MB							
	White 5000 K	701269-5W24MJ1-MB							
	White 4000 K	701269-4W24MJ1-MB							
	White 3000 K	701269-3W24MJ1-MB							
<b>SloanLED Prism<sup>24</sup> Mini Colors</b>									
8.2/m (2.5/ft)	Red (623 nm)	701269-RD24MJ1-MB	50-100 mm (2-4")	0.26 W	10	40 lm/W	IP66 & 68*	340 modules (41.5 m / 136.0 ft) per 100 W 24 VDC power supply	9.1 m / 30.0 ft (75 modules) per bag
	Green (529 nm)	701269-GR24MJ1-MB			22	85 lm/W		214 modules (26.1 m / 85.6 ft) per 100 W 24 VDC power supply	
	Blue (468 nm)	701269-BL24MJ1-MB			9	19 lm/W			
<b>SloanLED Prism<sup>24</sup> LP</b>									
4.9/m (1.5/ft)	White 7100 K	701269-7W24LJ1-MB	75-200 mm (3-8")	0.43 W	70	162 lm/W	IP66 & 68*	208 modules (42.3 m / 138.7 ft) per 100 W 24 VDC power supply	13.2 m / 43.3 ft (52 modules) per bag
	White 6500 K	701269-6W24LJ1-MB							
	White 5000 K	701269-5W24LJ1-MB							
	White 4000 K	701269-4W24LJ1-MB							
	White 3000 K	701269-3W24LJ1-MB							

### SloanLED Prism<sup>24</sup>

Premium 24V LED channel letter lighting solution

- Available in Standard (White [7100 K, 6500 K, 5000 K, 4000 K, 3000 K], Red, Green, Blue) and High Output (White [6500 K and 5000 K])
- Ideal for standard channel letters 75-200 mm (3-8") deep (standard model) and large channel letters 125-200 mm (5-12") deep (high output model)
- Use fewer modules for faster installation and lower cost per sign



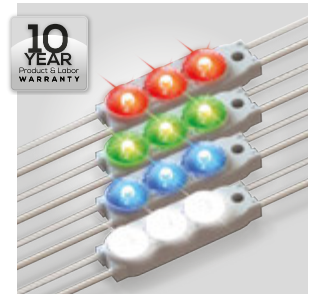
10 YEAR Product & Labor WARRANTY

**24 VDC**

### SloanLED Prism<sup>24</sup> Mini

Premium 24V LED lighting solution for small channel letters

- Available in White (7100 K, 6500 K, 5000 K, 4000 K, and 3000 K), Red, Green, and Blue
- Ideal for small channel letters 50-100 mm (2-4") deep
- Use fewer modules for faster installation and lower cost per sign



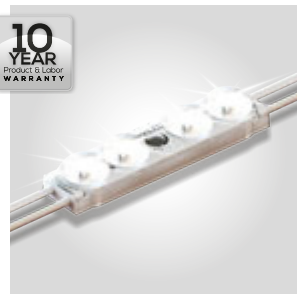
10 YEAR Product & Labor WARRANTY

**24 VDC**

### SloanLED Prism<sup>24</sup> LP

Premium 24V LED lighting solution for low-profile channel letters

- Available in White (7100 K, 6500 K, 5000 K, 4000 K, and 3000 K)
- Ideal for low-profile channel letters and signs 75-200 mm (3-8") deep
- Use fewer modules for faster installation and lower cost per sign



10 YEAR Product & Labor WARRANTY

**24 VDC**

\* Prism IP68 test parameters are 1.3 m submersion for 30 minutes. Do not mount in submerged application or where module will be directly exposed to prolonged flowing or dripping water.



# PERFORMANCE

High-performance 12 VDC channel letter lighting solutions

Modules per m/ft	Description	Part number	Optimal can depth	Power / module	Lumens / module	Efficacy	Protection class	Power capacity	Packaging
------------------	-------------	-------------	-------------------	----------------	-----------------	----------	------------------	----------------	-----------

### SloanLED Prism Whites

3.3/m (1/ft)	White 6500 K	701269-6WSJ2-MB	75-200 mm (3-8")	1.12 W	124	111 lm/W	IP66 & 68*	48 modules (14.6 m / 48.0 ft) per 60 W 12 VDC power supply	14.6 m / 48.0 ft (48 modules) per tray
4.9/m (1.5/ft)	White 7100 K	701269-7WSJ1-MB						48 modules (9.8 m / 32.0 ft) per 60 W 12 VDC power supply	9.8 m / 32.0 ft (48 modules) per tray
	White 6500 K	701269-6WSJ1-MB							
	White 5700 K	701269-57SJ1-MB							
	White 5000 K	701269-5WSJ1-MB							
	White 4000 K	701269-4WSJ1-MB							
White 3000 K	701269-3WSJ1-MB	120						107 lm/W	
			115	103 lm/W					

### SloanLED Prism Colors

6.6/m (2/ft)	Red (628 nm)	701269-RDSJ3-MB	75-200 mm (3-8")	0.72 W	24	33.5 lm/W	IP66 & 68*	75 modules (11.4 m / 37.5 ft) per 60 W 12 VDC power supply	7.3 m / 24 ft (48 modules) per tray
4.9/m (1.5/ft)		701269-RDSJ1-MB						75 modules (15.2 m / 50 ft) per 60 W 12 VDC power supply	9.8 m / 32 ft (48 modules) per tray
	Orange (606 nm)	701269-ORSJ1-MB							
	Yellow (589 nm)	701269-YLSJ1-MB							
	Green (527 nm)	701269-GRSJ1-MB							
	Blue (471 nm)	701269-BLSJ1-MB							
								60	83 lm/W
			18	25 lm/W					

### SloanLED Prism<sup>12</sup> Mini Whites

6.6/m (2.0/ft)	White 7100 K	701269-7W12MJ1-MB	50-100 mm (2-4")	0.38 W	50	132 lm/W	IP66 & 68*	142 modules (21.6 m / 71.0 ft) per 60 W 12 VDC power supply	21.6 m / 71.0 ft (142 modules) per bag, 3 bags per carton
	White 6500 K	701269-6W12MJ1-MB							
	White 5000 K	701269-5W12MJ1-MB							
	White 4000 K	701269-4W12MJ1-MB							
	White 3000 K	701269-3W12MJ1-MB							

### SloanLED Prism<sup>12</sup> Mini Colors

6.6/m (2.0/ft)	Red (628 nm)	701269-RD12MJ1-MB	50-100 mm (2-4")	0.30 W	12	40 lm/W	IP66 & 68*	180 modules (27.4 m / 90.0 ft) per 60 W 12 VDC power supply	27.4 m / 90.0 ft (180 modules) per bag, 2 bags per carton		
	Green (527 nm)	701269-GR12MJ1-MB								30	100 lm/W
	Blue (471 nm)	701269-BL12MJ1-MB								8	27 lm/W

### SloanLED Prism<sup>12</sup> Nano+

25 m (7.6 ft)	White 7200 K	701269-7W12NJ1-MB	25-75 mm (1-3")	0.22 W	35	160 lm/W	IP66	250 modules (10.0 m / 32.8 ft) per 60 W 12 VDC power supply	6.0 m / 19.7 ft (150 modules) per bag, 7 bags per carton
	White 6500 K	701269-6W12NJ1-MB							
	White 5000 K	701269-5W12NJ1-MB							
	White 4000 K	701269-4W12NJ1-MB							
	White 3000 K	701269-3W12NJ1-MB							

### SloanLED Prism<sup>12</sup> Nano+ Colors

25 m (7.6 ft)	Red (625 nm)	701269-RD12NJ1-MB	25-75 mm (1-3")	0.13 W	4.9	38 lm/W	IP66	415 modules (16.6 m / 54.5 ft) per 60 W 12 VDC power supply	6.0 m / 19.7 ft (150 modules) per bag, 7 bags per carton		
	Green (530 nm)	701269-GR12NJ1-MB								13.5	104 lm/W
	Blue (470 nm)	701269-BL12NJ1-MB								3.0	23 lm/W

## SloanLED Prism

Premium 12V LED channel letter lighting solution

- Available in White (7100 K, 6500 K, 5700 K, 5000 K, 4000 K, 3000 K), Red, Orange, Yellow, Green, Blue
- Ideal for standard channel letters 75-200 mm (3-8") deep (standard model)
- Versatile mounting options

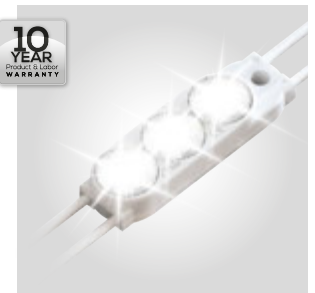


12 VDC

## SloanLED Prism Mini

Premium 12V LED lighting solution for small channel letters

- Available in White (7100 K, 6500 K, 5000 K, 4000 K, 3000 K), Red, Green, and Blue
- Ideal for small channel letters (50-100 mm) 2-4" deep
- Versatile mounting options



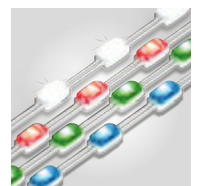
## SloanLED Prism<sup>12</sup> Nano+

Premium 12V LED lighting solution for block acrylic signs and small channel letters

Premium 12V LED lighting solution for block acrylic signs and small channel letters



- Available in White (7200 K, 6500 K, 5000 K, 4000 K, and 3000 K), Red, Green, and Blue
- Ideal for routed acrylic block letter, shallow channel letter, and backlit halo letter applications as shallow as 25 mm (1")
- More modules per power supply, up from 150 to an unprecedented 250 white modules on a 60 W power supply
- Efficacy of up to 160 lm/W making SloanLED Prism<sup>12</sup> Nano+ the class-leading solution over competing 12 & 24 V products



## VALUE SERIES

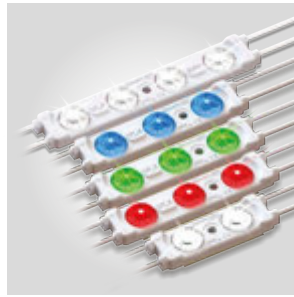
Everyday channel letter lighting solutions

Modules per m/ft	Description	Part number	Optimal can depth	Power / module	Lumens / module	Efficacy	Protection class	Power capacity	Packaging
<b>VL4 Whites</b>									
4.6/m (1.4/ft)	White 7200 K	701269-7W2A2-MB	75-125 mm (3-5")	0.96 W	107	111 lm/W	IP66	56 modules (12.2 m / 40.0 ft) per 60 W 12 VDC power supply	12.2 m / 40.0 ft (56 modules) per bag, 10 bags per carton
	White 6500 K	701269-6W2A2-MB							
	White 4000 K	701269-4W2A2-MB							
<b>VL4 Colors</b>									
4.9/m (1.5/ft)	Red (623 nm)	701269-3W2A2-MB	75-125 mm (3-5")	0.50 W	20	40 lm/W	IP66	108 modules (21.9 m / 72.0 ft) per 60 W 12 VDC power supply	21.9 m / 72.0 ft (108 modules) per bag, 4 bags per carton
	Green (524 nm)	701269-GR3A2-MB			50	100 lm/W			
	Blue (468 nm)	701269-BL3A2-MB			9.5	19 lm/W			
<b>VL4 Mini</b>									
8.2/m (2.5/ft)	White 6500 K	701269-6W1A2-MB	50-75 mm (2-3")	0.36 W	40	111 lm/W	IP66	150 modules (18.3 m / 60.0 ft) per 60 W 12 VDC power supply	18.3 m / 60.0 ft (150 modules) per bag, 3 bags per carton
	White 5000 K	701269-5W1A2-MB							
	White 3000 K	701269-3W1A2-MB							
<b>VL4 High Output</b>									
4.9/m (1.5/ft)	White 6500 K	701269-6W3A1-MB	125-200 mm (5-8")	1.20 W	130	108 lm/W	IP66	45 modules (9.1 m / 30.0 ft) per 60 W 12 VDC power supply	9.2 m / 30.0 ft (45 modules) per bag, 10 bags per carton
<b>VL4 Super High Output (24 VDC)</b>									
2.13/m (0.65/ft)	White 6500 K	701269-6W4A1-MB	125-305 mm+ (5-12"+)	1.42 W	233	164 lm/W	IP66	60 modules (28.1 m / 92.3 ft) per 100 W 24 VDC power supply	28.1 m / 92.3 ft (60 modules) per bag, 5 bags per carton

### VL4

Everyday standard face lit solutions

- Available in Standard (White [7200 K, 6500 K], Red, Green, and Blue), High Output and Super High Output (White 6500 K)
- Ideal for standard channel letters 75-200 mm (3-8") deep (Standard) and large channel letters 125-305 mm+ (5-12"+) deep (High Output and Super High Output)
- Versatile mounting options

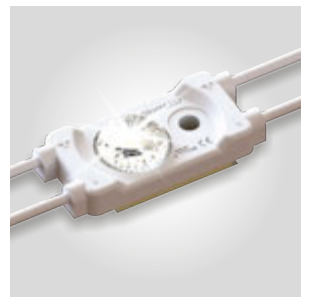


**12 VDC** **24 VDC**

### VL4 Mini

Everyday LED lighting solution for small channel letters

- Available in White (6500 K, 5000 K, 3000 K)
- Ideal for small channel letters 50-100 mm (2-4") deep
- Versatile mounting options



**12 VDC**

## Also available:

LEDs per m/ft	Description	Part number	Viewing angle	Power per m/ft	Lumens per m/ft	Efficacy	Protection class	Power capacity	Packaging
<b>SloanLED FlexTAPE Whites</b>									
60 / 18	White 6500 K	701990-6W12SA1	120°	4.6 / 1.4 W	525 / 160	114.3 lm/W	IP64*	42 modules (9.1 m / 30.0 ft) per 60 W 12 VDC power supply	Ten (10) 5-m (16.4-ft) reels per carton
	White 5000 K	701990-5W12SA1							
	White 3500 K	701990-3512SA1							
60 / 18	Red (623 nm)	701990-RD12SA1	120°	3.6 / 1.1 W	129.8 / 39.6	35.4 lm/W	IP64*	3 assemblies (15.0 m / 49.2 ft) per 60 W 12 VDC power supply	Ten (10) 5-m (16.4-ft) reels per carton
<b>SloanLED FlexTAPE Colors</b>									
LEDs per section	Description	Part number	Optimal can depth	Power	Lumens per strip	Efficacy	Protection class	Power capacity	Packaging
<b>BendLUX</b>									
3	White 6500 K	701960-6WS241	30 mm (1.2")	0.3 W per section, 4.2 per strip	365	85 lm/W	N/A	12.5 strips per 60 W 12 VDC power supply	12 strips per box

\* May be installed in damp or wet environment in enclosure with appropriate weather protection. Do not mount in submerged application or where module will be directly exposed to prolonged flowing or dripping water.

# Sign Cabinet/Box

SloanLED offers brilliant sign lighting solutions for single and double-sided, narrow to large, new and retrofit, box and cloud signs. Our products are designed and engineered with sign makers in mind, to provide bright, even illumination, incredible ROI, and fast, easy installation.

We spend our time inside the box, to provide lighting solutions that go beyond the box to brighten your bottom line.



## SloanLED PrismBEAM<sup>24</sup>

Pre-assembled, stick-based LED illumination for new & retrofit sign cabinet applications

Leveraging the power and efficiency of our 24 V channel letter modules, SloanLED PrismBEAM<sup>24</sup> delivers bright, uniform illumination in new and retrofit, single and double-sided sign cabinets.

- Available in all standard lamp sizes
- Easy installation using existing sockets, requiring no connectors or adapters
- Incredible efficacy at 165 lm/W—44% more efficient than its predecessor
- Uniform illumination at 125-200 mm (5-8") optimum, up to 400 mm (16") maximum from face



	Single-sided	Double-sided	
Lengths	0.46 m (18 in)	701972-6W24PS181	701972-6W24PD181
	0.61 m (24 in)	701972-6W24PS241	701972-6W24PD241
	0.76 m (30 in)	701972-6W24PS301	701972-6W24PD301
	0.91 m (36 in)	701972-6W24PS361	701972-6W24PD361
	1.07 m (42 in)	701972-6W24PS421	701972-6W24PD421
	1.22 m (48 in)	701972-6W24PS481	701972-6W24PD481
	1.52 m (60 in)	701972-6W24PS601	701972-6W24PD601
	1.63 m (64 in)	701972-6W24PS641	701972-6W24PD641
	1.83 m (72 in)	701972-6W24PS721	701972-6W24PD721
	2.13 m (84 in)	701972-6W24PS841	701972-6W24PD841
	2.44 m (96 in)	701972-6W24PS961	701972-6W24PD961
2.74 m (108 in)	701972-6W24PS1081	701972-6W24PD1081	
2.97 m (117 in)	701972-6W24PS1171	701972-6W24PD1171	
3.05 m (120 in)	701972-6W24PS1201	701972-6W24PD1201	
Color temperatures	6500 K		
Efficacy	165 lm/W		
Optimum cabinet depth	127-203 mm (5-8")	254-406 mm (10-16")	
Protection class	IP66 & IP68*		
Life rating	>60,000 hours		
Fastening	Mounts to existing lampholders or SloanLED PrismBEAM <sup>24</sup> brackets		

### SloanLED PrismBEAM<sup>24</sup> Accessories

Bracket	
Optional – Sold in bags of 10	402607-10



\* SloanLED PrismBEAM<sup>24</sup> IP68 test parameters are 1.3 m submersion for 30 minutes. Do not mount in submerged application or where module will be directly exposed to prolonged flowing or dripping water.

## SignBOX 3

LED illumination for single or double-sided sign boxes

SignBOX 3, for single or double-sided sign cabinets, features micro prism lens technology engineered to deliver bright, uniform illumination and wider spacing in new or retrofit sign boxes.

- Illuminates 125 mm (5") from the face
- SignBOX 3 Module features a peel-and-stick adhesive back for fast, easy installation
- 24 VDC loading allows 48 single-sided modules or 24 double-sided modules per power supply for maximum efficiency and fewer power supplies



## SignBOX 3 Slim

LED illumination for shallow, double-sided sign boxes

SignBOX 3 Slim packs the power and performance of SignBOX 3 into a slim and highly efficient package designed for shallow, double-sided light boxes.

- Optimal for large, shallow, double-sided sign boxes with a minimum overall depth of 150 mm (6 in)
- 24 VDC loading allows 72 modules per power supply for maximum efficiency and fewer power supplies



		Strapped single-sided	Strapped double-sided	Module
Part number	6500 K	701946-6WSLS1	701946-6WDLS1	701946-6WSLT1
	5000 K	701946-5WSLS1	701946-5WDLS1	701946-5WSLT1
Modules per m (ft)	3.3 (Modules per ft (m))			
Coverage per row	305 mm (12")			
Optimal light throw	125 - 300 mm (5 - 12") from face			
Protection class	IP66 & IP68*			
Life rating	>60,000 hours			
Power per module	1.92 W	3.84 W	1.92 W	
Efficacy	156 lm/W			
Power capacity per SloanLED 100 W 24 VDC power supply	48	24	48	
Fastening	Clips with mechanical fasteners		Peel-n-stick	
Packaging	60 modules per carton, 40 clips included		3 trays, 48 modules per tray	
Lumens per module	300	600	300	

Part number	701946-6WDLS2
Modules per m (ft)	6.6 (2)
Coverage per row	305 mm (12")
Protection class	IP66
Life rating	>60,000 hours
Power per module	1.20 W
Efficacy	152 lm/W
Power capacity per SloanLED 100 W 24 VDC power supply	72
Fastening	Clips with mechanical fasteners
Packaging	60 modules (9.1 m / 30 ft) per carton, 20 clips included
Lumens per module	182

### SignBOX 3 Accessories

Mounting hardware	
Bracket – Bag of 10	402107-10
Coupler – Bag of 10	402108-10
Clip – Bag of 20	402106-20



### SignBOX 3 Slim Accessories

Mounting hardware	
Bracket – Bag of 10	402107-10
Coupler – Bag of 10	402108-10
Clip – Bag of 20	402106-20



## SloanLED BrightLINE 2

LED illumination for shallow, single-sided sign boxes

SloanLED BrightLINE 2 is better than ever, delivering bright, uniform illumination and fast, easy installation in shallow, single-sided, fabric-face light boxes more efficiently with lower energy consumption allowing for more product per power supply!

- Ideal for single-sided, fabric-face light boxes 30 - 120 mm (1.2 - 4.7") deep
- **NEW** LP version features tighter spacing at 100 mm (4") for exceptionally shallow cabinets
- Lower energy consumption over previous generation allowing more product per power supply



### SloanLED BrightLINE 2

### SloanLED BrightLINE 2 LP

		Long 6500 K	Long 4000 K	Short 6500 K	Short 4000 K	Long 6500 K	Long 4000 K	Short 6500 K	Short 4000 K
Part number		701989-6W24LB1	701989-4W24LB1	701989-6W24SB1	701989-4W24SB1	701989-6W24LB2	701989-4W24LB2	701989-6W24SB2	701989-4W24SB2
Coverage per row	Cabinet depth								
	40 mm (1.6")	100 mm (4.0")							
	50 mm (2")	120 mm (5.0")							
	60 mm (2.4")+	150 mm (6.0")							
Strips per meter / foot		6.7 / 2.0 (fully spaced)				10.0 / 3.1 (fully spaced)			
Life rating		>54,000 hours							
Power per strip		3.33 W		1.11 W		2.05 W		0.68 W	
Efficacy		150 lm/W		150 lm/W		163 lm/W		163 lm/W	
Lumens per strip		500		167		333		111	
Power capacity per SloanLED 100 W 24 VDC power supply		4.1 m (13.3 ft) / 27 strips		12.2 m (39.9 ft) / 81 strips		6.6 m (21.6 ft) / 44 strips		19.8 m (64.9 ft) / 132 strips	

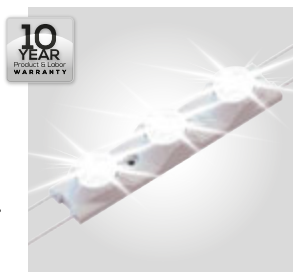
## PosterBOX Slim 2

Side illumination for shallow light boxes

PosterBOX™ Slim 2 washes light across single and double-sided displays using FanFlare™ lens technology that optimizes the light inside the box.

- Excellent white light intensity and uniformity
- Optimal for applications as shallow as 50 mm (2"), e.g., indoor textile prints, movie posters, and cabinets using FlexFace®

\* Prism IP68 test parameters are 1.3 m submersion for 30 minutes. Do not mount in submerged application or where module will be directly exposed to prolonged flowing or dripping water.  
† Testing highly recommended as all substrates and graphics vary.



Part number	701946-6WXL3	701946-5WXL3
Color temperatures	6500 K	5000 K
Light coverage†	0.6 m (2 ft)	
Modules per foot/meter	4.6 / 1.4	
Minimum box depth	50 mm (2 in), single or double-sided	
Protection class	IP66	
Viewing angle	15° × 43°	
Power per module	1.68 W	
Efficacy	110 lm/W	
Lumens per module	185	
Power capacity	32 modules per SloanLED 60 W 12 VDC power supply	
Fastening	Peel-n-stick and mechanical	
Packaging	32 daisy chained modules per bag, 4 bags per carton	

## PosterBOX ID

High-performance light box illumination for interior signage and POP applications

PosterBOX™ ID is a value-driven lighting solution delivering the power and brilliance of PosterBOX 3 to indoor applications—trimming unnecessary hardware and outdoor protection to offer a low-cost solution with the same quality and reliability you've come to expect from SloanLED.

- Illuminate box widths up to 10 ft (3 m) by placing product on opposing sides of the display
- Top-tier LED chips and high-performance optics
- Constant Current Technology



Part number	Short	701946-6WSNP1
	Long	701946-6WLN1
Location rating	Indoor use only	
Color temperature	6500 K	
Power per assembly	Short	7.2 W
	Long	14.0 W
Efficacy	Short	118 lm/W
	Long	121 lm/W
Lumens per assembly	Short	850
	Long	1700
Power capacity	Short	Max. of 12 units per SloanLED 100 W 24 VDC power supply
	Long	Max. of 6 units per SloanLED 100 W 24 VDC power supply
Fastening	Peel-n-stick and mechanical	
Packaging	Six (6) assemblies per bag, 5 bags per carton	

## PosterBOX 3

Large, shallow fabric-faced light box illumination

PosterBOX™ 3, engineered specifically for large, fabric-faced light box applications, is the bright and even lighting solution this unique application requires.

- Slim, edge mounted modules make installs fast and easy
- Bright, even illumination in large cabinets with shallow depths of 50 mm (2") for single-sided applications and 100 mm (4") for double-sided applications
- Built-in module spacer eliminates measuring and yields perfect LED pitch every time



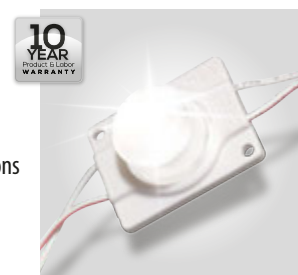
Part number	Short	701946-6WSRP1
	Long	701946-6WLRP1
Viewing angle	12.2° × 44.8° illumination	
Color temperature (nominal)	6500 K	
Minimum cabinet depth	Single-sided	75 mm (3")
	Double-sided	100 mm (4")
Protection class	IP66	
Power per module	Short	7.2 W
	Long	14.0 W
Efficacy	Short	118 lm/W
	Long	121 lm/W
Lumens per assembly	Short	850
	Long	1700
Power capacity	6 modules per SloanLED 100 W 24 VDC power supply	
Fastening	Mechanical fasteners, Peel-n-stick (optional)	
Packaging	6 assemblies per tray, 5 trays per carton	

## PosterBOX Mini

Side illumination for shallow or narrow light boxes

PosterBOX™ Mini is a cost-effective, edge-lit cabinet lighting solution for lightbox applications as shallow as 50 mm (2") deep.

- Cost effective, edge-lit cabinet lighting solution for applications as shallow as 50 mm (2") deep
- Innovative design and adjustable spacing make installation easy for a variety of light boxes of different depths and shapes
- FanFlare™ technology projects light in a fan pattern to evenly illuminate sign face



Part number	701946-6WMLP1	
Viewing angle	15 × 40°	
Module spacing	188 mm (7.4") center-to-center	
Protection class	IP66	
Power per module	1.2 W	
Efficacy	87 lm/W	
Lumens per module	104	
Power capacity	45 modules per SloanLED 60 W 12 VDC power supply	
Fastening	Peel-n-stick and mechanical	
Packaging	60 modules per bag, 10 bags per carton	

# Linear Lighting

Linear Lighting from SloanLED is a great solution for illuminating cove, awning, and wall wash applications or to highlight non-illuminated signs.



## HighLINER 3

Outdoor and indoor linear lighting

- Easy installation for both new construction and retrofit
- Improves walkway and aisle visibility and building aesthetics
- Easily daisy-chain up to six (6) 1.2-m (4-ft) luminaires with 100 W driver
- NSF/ANSI 2 qualified for use around food processing and on processing equipment



24  
VDC

Color temperatures (CCT)		3500 K	5000 K
Part number	0.3 m (1'), 4.6 W	701912-L135C3i18	701912-L150C3i18
	0.6 m (2'), 9.3 W	701912-L235C3i18	701912-L250C3i18
	1.2 m (4'), 18.5 W	701912-L435C3i18	701912-L450C3i18
	1.8 m (6'), 27.8 W	701912-L635C3i18	701912-L650C3i18
	2.4 m (8'), 37.0 W	701912-L835C3i18	701912-L850C3i18
Output (nominal)	0.3 m (1'), 4.6 W	559 Lumens	607 Lumens
	0.6 m (2'), 9.3 W	1,119 Lumens	1,168 Lumens
	1.2 m (4'), 18.5 W	2,237 Lumens	2,430 Lumens
	1.8 m (6'), 27.8 W	3,356 Lumens	3,646 Lumens
	2.4 m (8'), 37.0 W	4,475 Lumens	4,861 Lumens
Efficacy*	126 lm/W		132 lm/W
Color rendering (CRI)	>80		
Ingress protection	Luminaire: IP68†; Std. wire nut with housing‡: IP66		
UL location rating	Dry, damp, and wet locations		
Life rating	L <sub>70</sub> >100,000 hours calculated‡		
Dimming	All luminaires dimmable with 0-10 V <sub>0</sub> or PWM input to drivers		

## SlimLINER

Low-profile outdoor and indoor linear lighting

- Fast, easy installation with versatile mounting options
- Can be cut in the field to custom lengths
- Slim, lightweight, low-profile fixture
- 305 mm (12") bend radius
- Illuminates awnings evenly
- Constant Current Technology (CCT)



Part number	701956-5WL461	701956-3WL461
Color temperatures (CCT)	5000 K	3500 K
Lumens per fixture	970	825
Color rendering (CRI)	70 (nominal)	82 (nominal)
In-field bends	Radial bend: 305 mm (12 in)	
Protection class	IP66 & IP68	
Fastening	Peel-n-stick or mounting clips (401203), 4 included with each unit	
Power capacity	6 units per SloanLED 60 W 12 VDC power supply	
Dimensions L × W × H	1168 mm × 23 mm × 9 mm (46" × 0.89" × 0.35")	

\* Tolerance range for optical and electrical data +/- 15%.

† IP68 ratings provide protection for extreme outdoor and wet applications, or harsh weather exposure.

‡ Do not mount in submerged applications.

§ Based on LED component manufacturer data.

¶ Luminaires ship with mounting clips and wire nut housings.

# SloanLED LEDBlade

LED canopy fascia  
& wall wash fixture

- Ideal for canopy fascia and wall wash applications requiring excellent light throw
- Can be cut to custom lengths in the field
- Linear form factor for fast, easy installation
- No UV emissions
- 5-year parts and labor assistance warranty



24  
VDC

Part number	701994-6WASX1
Color temperature (CCT)	6500 K
Lumens per assembly	3,118
Life rating	L <sub>70</sub> @ >60,000 hours
Efficacy	120 lm/W
Ingress protection	IP66
UL location rating	Dry, damp, and wet
Fastening	Mounting clips
Power capacity	Three (3), 5-ft (1.5-m) SloanLED LEDBlade sections per SloanLED 100 W 24 VDC power supply

## SloanLED LEDBlade Accessories

Cables and connectors		
Hook-up cable, 10-ft (3.0-m)	Connects LEDBlade to power supply	701158-120
Hook-up cable, 15-ft (4.6-m)		701158-180
Wiring pigtail, large connector	Male, outdoor-rated connector	701187-DC
Wiring pigtail, small connector	Female, outdoor-rated connector	701188-DC
Mounting		
Mounting clip	For mounting product to surfaces	402453
Field end cap	For adjusting product length	402494
Field end cap installation kit	Glue, PCB sealer, de-burr sandpaper, instructions	701491

# Power Supplies

12 VDC\* – Compatible with SloanLED 12 VDC products

## Accessories



Universal LED  
Bluetooth Dimmer  
601115



Universal  
Dimming Controller†  
701666

Model	Part number	Dimensions	Nominal input voltage	Max. input current	Power output	Location rating	Operating temperature	Protection class
<b>Compact 12/25 W</b>	410174	148 mm × 40 mm × 32 mm (5.83 in × 1.58 in × 1.26 in)	100-240 VAC, 50-60 Hz	0.40 A	25 W @ 12 VDC, Class 2 output	Dry and damp locations	-40° C to +70° C	IP67
<b>60C2 60 W</b>	701507-60C2	159 mm × 55 mm × 33 mm (6.26 in × 2.17 in × 1.30 in)	100-277 VAC, 50-60 Hz	0.80 A	60 W @ 12 VDC, Class 2 output	Dry and damp locations	-40° C to +60° C, derate to 50% of max load at +70° C	IP66
<b>60C3(D) 60 W</b>	701507-60C3(D)	147 mm × 46 mm × 25 mm (5.80 in × 1.80 in × 1.00 in)	100-277 VAC, 50-60 Hz	0.80 A	60 W @ 12 VDC, Class 2 output	Dry and damp locations	-40° C to +60° C, derate to 50% of max load at +70° C	IP64
<b>60W3 60 W</b>	701507-60W3	248 mm × 45 mm × 35 mm (9.76 in × 1.76 in × 1.36 in)	100-277 VAC, 50-60 Hz	0.80 A	60 W @ 12 VDC, Class 2 output	Dry, damp, and wet locations	-40° C to +60° C, Derate to 50% of max load at +70° C	IP68
<b>120D1 120 W</b>	701507-120D1	244 mm × 56 mm × 43 mm (9.6 in × 2.2 in × 1.7 in)	100-277 VAC, 50-60 Hz	1.70 A	120 W @ 12 VDC, two (2) Class 2 outputs	Dry and damp locations	-40° C to +60° C, natural convection cooling	IP54
<b>Quantum 30 W</b>	701507-30E1	202 mm × 44 mm × 33 mm (7.6 in × 1.7 in × 1.3 in)	200-240 VAC, 50-60 Hz	0.2 A	30 W @ 12 VDC, Class 2 output	Dry, damp, and wet locations	-40° C to +60° C, Derate to 50% of max load at +70° C	IP68
<b>Quantum 60 W</b>	701507-60E1	202 mm × 44 mm × 33 mm (8.0 in × 1.7 in × 1.3 in)	200-240 VAC, 50-60 Hz	0.5 A	60 W @ 12 VDC, Class 2 output	Dry, damp, and wet locations	-40° C to +60° C, Derate to 50% of max load at +70° C	IP68
<b>Quantum 150 W</b>	701507-150EB1	234 mm × 66 mm × 34 mm (9.2 in × 2.6 in × 1.3 in)	200-240 VAC, 50-60 Hz	1.1 A	150 W @ 12 VDC, two (2) Class 2 outputs	Dry, damp, and wet locations	-40° C to +60° C, Derate to 50% of max load at +70° C	IP68

\* Configured for Class 2 Output.

† Compatible with 701507-60C3D, 701895-60S1D, 701895-24S2D, and 701895-100L1D.

24 VDC\* – Compatible with SloanLED 24 VDC products

Model	Part number	Dimensions	Nominal input voltage	Max. input current	Power output	Location rating	Operating temperature	Protection class
<b>60S1(D) 60 W</b> <i>Dimming and non-dimming</i>	701895-60S1(D)	147 mm × 46 mm × 25 mm (5.80 in × 1.80 in × 1.00 in)	120-277 VAC, 50-60 Hz	0.8 A	60 W @ 24 VDC, Class 2 output	Dry and damp locations	-40° C to +60° C, derate to 50% of max load at +70° C	IP64
<b>100L1(D) 100 W</b> <i>Dimming and non-dimming</i>	701895-100L1(D)	241 mm × 43 mm × 25 mm (9.5 in × 1.7 in × 1.0 in)	120-277 VAC, 50-60 Hz	0.95 A	100 W @ 24 VDC, Class 2 output	Dry and damp locations	-40° C to +60° C, derate to 50% of max load at +60° C	IP54
<b>24 VDC 100 W</b> <i>Dry, damp, and wet</i>	701895-24C1	236 mm × 62 mm × 39 mm (9.29 in × 2.44 in × 1.55 in)	100-277 VAC, 50-60 Hz	1.3 A	100 W @ 24 VDC, Class 2 output	Dry, damp, and wet locations	-40° C to +60° C, Derate to 50% of max load at +70° C	IP68
<b>24S1 100 W</b>	701895-24S1	193 mm × 63 mm × 40 mm (7.60 in × 2.48 in × 1.59 in)	100-277 VAC, 50-60 Hz	1.40 A	96 W @ 24 VDC, Class 2 output	Dry and damp locations	-40° C to +60° C	IP64
<b>24S2(D) 100 W</b> <i>Dimming and non-dimming</i>	701895-24S2(D)	218 mm × 44 mm × 29 mm (8.60 in × 1.73 in × 1.14 in)	108-277 VAC, 50-60 Hz	1.20 A	96 W @ 24 VDC, Class 2 output	Dry and damp locations	-40° C to +60° C, derate to 50% of max load at +65° C	IP54
<b>300T1 300 W</b>	701895-300T1	389 mm × 130 mm × 38 mm (15.3 in × 5.12 in × 1.5 in)	100-277 VAC, 50-60 Hz	4.0 A	3 × 96 W @ 24 VDC, Class 2 output	Dry and damp locations	-40° C to +60° C, derate to 50% of max load at +70° C	IP54
<b>Quantum 30 W</b>	701895-30E1	202 mm × 44 mm × 33 mm (7.6 in × 1.7 in × 1.3 in)	200-240 VAC, 50-60 Hz	0.2 A	30 W @ 24 VDC, Class 2 output	Dry, damp, and wet locations	-40° C to +60° C, Derate to 50% of max load at +70° C	IP68
<b>Quantum 60 W</b>	701895-60E1	202 mm × 44 mm × 33 mm (8.0 in × 1.7 in × 1.3 in)	200-240 VAC, 50-60 Hz	0.5 A	60 W @ 24 VDC, Class 2 output	Dry, damp, and wet locations	-40° C to +60° C, Derate to 50% of max load at +70° C	IP68
<b>Quantum 100 W</b>	701895-100E1	218 mm × 44 mm × 29 mm (8.6 in × 1.7 in × 1.1 in)	200-240 VAC, 50-60 Hz	1.2 A	96 W @ 24 VDC, Class 2 output	Dry, damp, and wet locations	-40° C to +60° C, Derate to 50% of max load at +70° C	IP68
<b>Quantum 150 W</b>	701895-150E1	234 mm × 66 mm × 34 mm (9.2 in × 2.6 in × 1.3 in)	200-240 VAC, 50-60 Hz	1.1 A	150 W @ 24 VDC, two (2) Class 2 outputs	Dry, damp, and wet locations	-40° C to +60° C, Derate to 50% of max load at +70° C	IP68

# Outdoor Commercial

SloanLED outdoor commercial LED lighting systems capture customer attention with consistent and bright illumination, in addition to providing sizable energy savings over non-LED fixtures.



## Revolutionary design for powerful solutions.

### PDL3 MODUS

LED lighting system

PDL3 MODUS sets a new standard in canopy/soffit lighting with its slim, lightweight, 25 mm (1") design, optimized Type V symmetric distribution, included driver, and IP68 rating offering the industries best protection from dust and water intrusion.

- Standard power supply module includes three field-selectable lumen output power settings: High (123, 141, 164 W output), Medium (76, 98, 119 W output), and Low (36, 50, 64 W output)



Standard



High Output

- Superior efficacy, up to 159 lm/W, for lower energy consumption and a smaller carbon footprint
- ATEX certified for use in hydrogen and petroleum fuel station canopies
- **Energy savings up to 250% over typical HID fixtures**



Pertains to 5000 K CCT luminaire only

	PDL3 MODUS						PDL3 MODUS High Output		
	M75			M150			MH200		
Power settings	Low (36 W) P2	Med (50 W) P1	High (64 W) DF <sup>†</sup>	Low (76 W) P2	Med (98 W) P1 <sup>‡</sup>	High (119 W) DF <sup>‡</sup>	Low (123 W) P2	Med (141 W) P1	High (164 W) DF <sup>‡</sup>
System efficacy <sup>§</sup>	159.3lm/W	157.9 lm/W	155.0 lm/W	152.7 lm/W	146.9 lm/W	142.5 lm/W	169.6 lm/W	167.8 lm/W	165.5 lm/W
Input voltage	100-277 VAC, 50-60 Hz								
Delivered lumens <sup>§</sup>	5,670	7,869	9,951	11,540	14,800	16,880	20,700	23,210	26,040
Light distribution	Symmetric (Type 5)								
Color temperature (CCT)	4000 K, 5000 K								
Ingress protection	IP68 (highest dust and water protection)								
UL location rating	Suitable for wet locations								
Life rating	Reported: L <sub>70</sub> >60,000 hours; Calculated: L <sub>70</sub> >150,000 hours						Reported: L <sub>70</sub> >60,000 hours; Calculated: L <sub>70</sub> >175,000 hours		
Dimming	1-10 VDC control on power supply*								

\* Requires 1-10 V connector cable (P/N 410168).

† ATEX certification for luminaire at 5000 K CCT only.

‡ All models are shipped at the highest system power setting unless ordered with factory preset options P1 or P2.

§ Based on 5000 K CCT data.



## Canopy/Soffit Applications

Driver enclosure

Order number: 601106



Included in kit: Power supply enclosure, gasket, and mounting hardware.†

- Power supply enclosure allows water to pass through and out
- Gasket seals against canopy – Eliminates need to seal installation with tar/roofing material

## Surface Mounted Applications

Surface mounting enclosure

Order number: 601022-M



Included in kit: SloanLED surface mounting box.†

- Mounts to: Solid flat surface, reinforced J-box

**Ordering Information**

Part number  
Example: 701948-5WTWT3-M150

701948-  T  3-

Color temp. (CCT)		Body color		Power* (Low, Med, High power settings)		Code		Desc.	
Code	Desc.	Code	Desc.	Code	Desc.	Code	Desc.	Code	Desc.
4W	4000 K	BZ	Bronze (MH200 only)	M75	75 W power (36, 50, 64 W output)	(blank)	High power setting (default)		
5W	5000 K	WT	White	M150	150 W power (76, 98, 119 W output)	P1	Medium power setting		
				MH200	200 W high output power (123, 141, 164 W output)	P2	Low power setting		



### Also available

#### MODUS SmartBAY™

The MODUS SmartBAY™ Wireless Control System

is an intelligent lighting control solution that features a wireless mesh (WPAN) control design allowing dimming based on traffic and occupancy detection to deliver the right amount of light—where and when you need it—for incredible ROI and energy savings.

Visit SloanLED.com for more information.

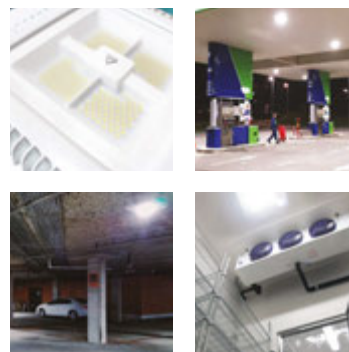


## PDL3 MODUS Mini

Surface mount LED lighting system

PDL3 MODUS Mini surface mount LED lighting system puts the power and innovation of the acclaimed PDL3 MODUS in a compact, self-contained design that includes everything needed for fast, one-person installation in outdoor canopy, parking garage, and walk-in cooler applications.

- Compact, self-contained design includes everything needed for fast, one-person installation
- Low energy consumption for a smaller carbon footprint
- Available single, multi, and networked zoned occupancy system accessories allow for automated lighting control without radio frequency disruptions
- Faster ROI, industry-leading warranty, and virtually maintenance free
- **Energy savings up to 250% over typical HID fixtures**



**Ordering Information**

Part number  
Example: 701948-4WTWT3-MM150

701948-  WTWT3-

Color temp. (CCT)		Driver	
Code	Desc.	Code	Desc.
4	4000 K	MM75	75 W Power (35.6 to 64.2 W output)
5	5000 K	MM150	150 W Power (75.6 to 118.4 W output)

# Cairo Floodlight

LED flood light  
CAFL

The Cairo Floodlight is designed as a replacement for HID fixtures in landscape, architectural wall wash, and signage lighting. Featuring three lumen packages, optional beam angles, and rugged, die-cast construction, Cairo Floodlight's versatile design makes it the ideal solution where you need task or accent lighting in your outdoor application.

- Wide range of brightness levels accommodates any project
- Optional beam angles for optimum results, 120° standard
- Easy installation with standard bracket and optional 60 mm pole mount adapter



System power	50 W		100 W		150 W	
Input voltage	100-277 VAC	220 VAC	100-277 VAC	220 VAC	100-277 VAC	220 VAC
Current*	Max. 0.6 A	Max. inrush 50 A	Max. 1.2 A	Max. inrush 80 A	Max. 1.8 A	Max. inrush 110 A
Lumens	7,000		15,000		22,500	
Efficacy	140 lm/W		150 lm/W		150 lm/W	
UGR	<32 (@120°)					
Power factor	>0.95					
THD	10%					
Surge protection	L/N-PE: 10 kV, L-N: 6 kV					
Color temperature (CCT)	5000 K					
Color rendering (CRI)	80					
Ingress protection	IP66					
Life rating	L <sub>70</sub> Reported: >54,000 hours, L <sub>70</sub> Calculated: 50,000 hours					
Finish	Black powder coat					

\* Input current +/- 10% (A).

## Ordering Information

Part number

Example: CAFL-50U-8-50-120BKXUB

CAFL-  U-8-50-  BKXUB

### Wattage

Code	Desc.
50	50 W
100	100 W
150	150 W

### Distribution

Code	Desc.
30	30°
60	60°
90	90°
120	120°
T3	Type III
T4	Type IV

# Solarta

LED flood lights  
LCG-FL

Solarta floodlights are designed as a replacement for 100 W HID fixtures in landscape, architectural wall wash, and signage lighting. Their versatile design makes them a great solution where you need task or accent lighting in your outdoor application.

- Medium range floodlights for outdoor foliage, sign, and accent lighting
- Tier 1 LED for high efficiency and long life
- Trunnion mounting bracket is adjustable 180°



System power	45 W	70 W
Input voltage	110-277 VAC or 200-480 VAC†	
Power factor	>0.95	
Light output‡	5,400 Lumens	8,400 Lumens
Color temperatures (CCT)	3000 K†, 4000 K, 5000 K	
Color rendering (CRI)	>70	
Driver efficiency	>90%	
Ingress protection	IP65	
UL location rating	Suitable for wet locations	
Life rating	>50,000 hours (L <sub>70</sub> ) at maximum operating conditions	
Finish	Bronze or White‡ polyester powder coat	

† Available by special order, contact SloanLED Sales.

‡ Based on 4000 K data.

## Ordering Information

Part number

Example: LCG-FL-45W-U-30K-BZ-T

LCG-FL-  -  -  -  -T

### Nominal wattage

Code	Desc.
45W	45 W
70W	70 W

### Voltage

Code	Desc.
U	100-277 VAC
H	200-480 VAC

### Kelvin temperature

Code	Desc.
30K	3000 K†
40K	4000 K
50K	5000 K

### Finish

Code	Desc.
BZ	Bronze
WT	White‡

# SurfLite 1

LED surface mounted canopy light  
LCG-CP

SurfLite 1 is a slim, surface mounting canopy fixture for parking structures, car washes, building soffits, and walkways.

- Slim design fits more applications with low overhead clearance
- Superior optic design for low glare and even light distribution



System power	35 W	45 W	65 W
Input voltage	100-277 VAC, 50-60 Hz		
System efficacy	131 lm/W	130 lm/W	130 lm/W
Power factor	>0.95		
Light output	4,600 Lumens	5,850 Lumens	8,450 Lumens
Color temperatures (CCT)	3000 K <sup>†</sup> , 4000 K, 5000 K		
Color rendering (CRI)	>70		
Dimming	1-10 VDC control on power supply		
Ingress protection	IP65		
UL location rating	Suitable for wet locations		
Life rating	>50,000 hours at maximum operating conditions		
Finish	Bronze and White <sup>†</sup> powder paint		

### Ordering Information

Part number

Example: LCG-CP-35W-U-40K-BZ-D1

LCG-CP-  -U-  -  -D1

Wattage		Kelvin temperature		Finish	
Code	Description	Code	Description	Code	Description
35W	35 W	30K	3000 K <sup>†</sup>	BZ	Bronze
45W	45 W	40K	4000 K	WT	White <sup>†</sup>
65W	65 W	50K	5000 K		

# Twilight

LED post top fixture  
LCG-PT

The Twilight LED post top area light beautifies parking areas, pedestrian walkways, and outdoor hospitality areas.



- Tier 1 LED for high luminous efficiency and long life
- High-crystalline optical glass lens for reduced glare
- Type II optic for path or area lighting

System power	30 W	40 W	50 W
Input voltage	100-277 VAC and 277-480 VAC		
System efficacy	96 lm/W		
Power factor	>0.90		
Light output	2,880 Lumens	3,840 Lumens	4,800 Lumens
Color temperatures (CCT)	3000 K, 4000 K, 5000 K		
Color rendering (CRI)	>70		
Dimming	Non-dimming		
Ingress protection	IP65		
UL location rating	Suitable for wet locations		
Life rating	>50,000 hours (L <sub>70</sub> )		
Finish	Black, Bronze, or White polyester powder coat		

### Ordering Information

Part number

Example: LCG-PT-30W-U-40K-T5-BZ

LCG-PT-  -  -  -T5-

Power		Voltage		Kelvin temp.		Finish	
Code	Desc.	Code	Desc.	Code	Desc.	Code	Desc.
30W	30 W	U	100-277 VAC	30K	3000 K	BK	Black
40W	40 W	H	277-480 VAC	40K	4000 K	BZ	Bronze
50W	50 W			50K	5000 K	WT	White

# PML4

LED pole mount series for area and roadway lighting

PML4 pole mount series delivers performance, value, and versatility with a complete suite of options and robust features for site, parking, and roadway lighting applications.

- 5-pin NEMA receptacle standard (3-pin, 7-pin, or no receptacle optional)
- 0-10 V/PWM standard (On/Off optional)
- Acrylic lenses to avoid yellowing



Size	200 W	150 W	120 W	90 W	60 W
System efficacy (lm/W)	129	132	126	132	130
Light output (nominal)	26,000 Lumens	19,803 Lumens	15,022 Lumens	12,072 Lumens	7,879 Lumens
Light distribution	Type II <sup>†</sup> , Type III <sup>†</sup> , Type V <sup>†</sup>				
Color temperatures (CCT)	3000 K <sup>†</sup> , 4000 K <sup>†</sup> , 5000 K <sup>†</sup>				
Color rendering (CRI)	>80				
Dimming	0-10 V / PWM standard (On/Off optional)				
Ingress protection	IP66				
Life rating	>50,000 hours				
Body colors	Silver <sup>†</sup> , White <sup>†</sup>				

### Ordering Information

Part number

Example: PML4-L200E50T2P3SVCA

PML4-  U

Power		Color temp. (CCT)		Optics		Control		Finish		Dimming		Lead		Option	
Code	Desc.	Code	Desc.	Code	Desc.	Code	Desc.	Code	Desc.	Code	Desc.	Code	Desc.	Code	Desc.
L200	200 W	50	5000 K <sup>†</sup>	T2	Type II <sup>†</sup>	(blank)	No photoreceptacle <sup>†</sup>	S	Silver <sup>†</sup>	X	On/Off <sup>†</sup>	F	Flying leads <sup>†</sup>	A	10Kv SPD <sup>†</sup>
L150	150 W	40	4000 K <sup>†</sup>	T3	Type III <sup>†</sup>	P3	3-pin NEMA <sup>†</sup>	W	White <sup>†</sup>	V	0-10 V/PWM <sup>†</sup>	C	Cord Set AUS/NZ <sup>†</sup>	B	20Kv SPD <sup>†</sup>
M120	120 W	30	3000 K <sup>†</sup>	T5	Type V <sup>†</sup>	P5	5-pin NEMA <sup>†</sup>								
M090	90 W					P7	7-pin NEMA <sup>†</sup>								
S060	60 W														

## Detroit

LED semi cutoff wall pack  
LCG-WPSC

Detroit semi-cutoff wall pack fixtures provide great security or broad area lighting in alleyways, commercial parks, and commercial/manufacturing facilities. Designed with lumen outputs of 5000 lm to 16,000 lm, they are a perfect retrofit for 250 W to 400 W HID fixtures.



- Die cast aluminum provides efficient cooling and durability
- Excellent optics design
- Easy to install with hinged base
- Mounts over J-box or wire with conduit by knockouts on three sides

System power	45 W	70 W	100 W	150 W
Input voltage	100-277 VAC or 200-480 VAC <sup>†</sup>			
Power factor	>0.95			
Light output	5,400 Lumens	8,400 Lumens	10,890 Lumens	16,680 Lumens
Color temperatures (CCT)	3000 K <sup>‡</sup> , 4000 K, 5000 K			
Color rendering (CRI)	>70		>80	
Dimming	Non-dimming			
Ingress protection	IP65			
UL location rating	Suitable for wet locations			
Life rating	>50,000 hours (L <sub>70</sub> ) <sup>§</sup>			
Finish	Bronze or White <sup>†</sup> polyester powder coat			

### Ordering Information

Part number

Example: LCG-WPSC-70W-U-50K-BZ

LCG-WPSC-  -  -  -

Nominal wattage		Voltage		Kelvin temperature		Finish	
Code	Desc.	Code	Desc.	Code	Desc.	Code	Desc.
45W	45 W	U	100-277 VAC	30K	3000 K <sup>‡</sup>	BZ	Bronze
70W	70 W	H	200-480 VAC <sup>†</sup>	40K	4000 K	WT	White <sup>†</sup>
100W	100 W			50K	5000 K		
150W	150 W						

## Portland

LED full cutoff wall pack  
LCG-WPFC

Portland full-cutoff wall pack fixtures provide a glare-free pathway and architectural wall light in retail malls, condominiums and apartments, business parks, and educational facilities.



Designed for Dark Sky compliance, they are the first choice for public areas that are light sensitive.

- Die cast aluminum provides efficient cooling and durability
- Excellent optics design with zero light above 90°
- Easy to install with hinged base
- Mounts over J-box or wire with conduit by knockouts on three sides of base

System power	45 W	70 W
Input voltage	100-277 VAC or 347-480 VAC <sup>†</sup>	
Power factor	>0.95	
Light output <sup>‡</sup>	5,940 Lumens	8,460 Lumens
Color temperatures (CCT)	4000 K, 5000 K	
Color rendering (CRI)	>70	
Dimming	Non-dimming	
Ingress protection	IP65	
UL location rating	Suitable for wet locations	
Life rating	>50,000 hours (L <sub>70</sub> ) <sup>§</sup> at maximum operating conditions	
Finish	Bronze or White <sup>†</sup> polyester powder coat	

### Ordering Information

Part number

Example: LCG-WPFC-70W-U-50K-BZ

LCG-WPFC-  -  -  -

Nominal wattage		Voltage		Kelvin temperature		Finish	
Code	Desc.	Code	Desc.	Code	Desc.	Code	Desc.
45W	45 W	U	100-277 VAC	40K	4000 K	BZ	Bronze
70W	70 W	H	347-480 VAC <sup>†</sup>	50K	5000 K	WT	White <sup>†</sup>

\* Based on LED component manufacturer data.

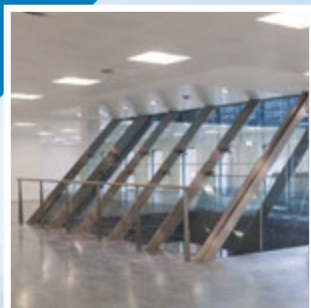
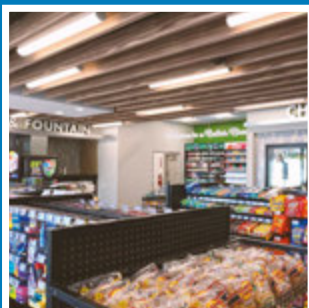
† Available by special order, please contact SloanLED for lead times.

‡ Based on 5000 K data.

§ Based on 4000 K data.

# Indoor Commercial

SloanLED indoor commercial LED lighting systems use cutting edge LED technology to combine class-leading efficiency, performance, and value to create aesthetically pleasing retail interiors.



## SloanLED Horizon

Premium backlit LED recessed luminaire

SloanLED Horizon back-lit LED panel delivers versatility and performance in new or retrofit construction with fast, easy installation, smooth light output, quality construction, dimming options, and superior efficacy.

- Maximum efficacy and minimum glare
- Suspension and surface mounting for convenient installation
- Impact-resistant PMMA light guide for lasting quality
- Control energy savings and adjust light levels for specific ambiance with 0-10 V/PWM dimming options

### Battery Backup



### Surface Mount Box



### Suspension Kit



### SloanLED Horizon Accessories

<b>8 W Battery backup</b>
AXEMB1-8W-CE
<b>Surface Mount Box</b>
AXSMT-6060-WH (600 × 600 mm)
AXSMT-6012-WH (600 × 1200 mm)
<b>Suspension Kit</b>
AXSUS-4WA (300 × 1200 mm)
AXSUS-4WB (600 × 600 mm and 600 × 1200 mm)

\* Based on LED component manufacturer data.

	600 × 600 mm	600 × 1200 mm
System power	40 W	48 W
Light output	4,963 Lumens	5,882 Lumens
Input voltage	220-240 VAC, 50-60 Hz	
System efficacy	122 lm/W	
Power factor	>0.9	
THD	<20%	
Beam angle	120°	
Color temperatures (CCT)	3000 K <sup>†</sup> , 4000 K, 5000 K <sup>†</sup>	
Color rendering (CRI)	>80	
Ingress protection	IP20 (dry location rated)	
Life rating	>60,000 hours reported	

Ordering Information									
Part number									
Sample: FP20-6060-4040X									
FP20- <input type="text"/> <input type="text"/> <input type="text"/> <input type="text"/>									
Size		Color temp (CCT)		Dimming		Lead			
Code	Desc.	Code	Desc.	Code	Desc.	Code	Desc.		
6060-40	600 × 600 mm	50	5000 K <sup>†</sup>	X	Non-dimming	(blank)	Flying leads		
6012-50	600 × 1200 mm	40	4000 K	V	0-10 V dim/PWM	A	AS/N25 molded cord set		
		30	3000 K <sup>†</sup>						

## Area 51

LED die-cast UFO high bay  
LCG-UFO

The Area 51 high bay fixture is designed for the high-performance lighting of warehouse, manufacturing, and indoor and outdoor area lighting. The weatherproof design allows it to be used as an outdoor catenary light fixture supported by cables.

- Die-cast high-performance magnesium body is more lightweight and runs cooler than aluminum
- Three lumen outputs from 15,000 lm to 28,000 lm to meet the requirements of most applications
- Spun aluminum shade option can be used to guard against glare in lower height installations
- 1-10 V dimming driver is standard
- Optional occupancy sensor available



System power	100 W	150 W	200 W
Input voltage	120-277 VAC and 200-480 VAC*		
System efficacy	150 lm/W	140 lm/W	140 lm/W
Power factor	>0.95		
Light output	15,000 Lumens	21,000 Lumens	28,000 Lumens
Color temperatures (CCT)	4000 K, 5000 K		
Color rendering (CRI)	>70		
Dimming	1-10 VDC control on power supply		
Ingress protection	IP65		
UL location rating	Suitable for wet locations		
Life rating	>50,000 hours (L <sub>70</sub> )		
Finish	Black and White* polyester powder coat		

### Ordering Information

Part number

Example: LCG-UFO-150W-U-40K-BK-D1

LCG-UFO-  -  -  -  -D1

Wattage		Voltage		Kelvin temperature		Finish	
Code	Desc.	Code	Desc.	Code	Desc.	Code	Desc.
100W	100 W	U	120-277 VAC	40K	4000 K	BK	Black
150W	150 W	H	200-480 VAC	50K	5000 K	WT	White*
200W	200 W						

### Area 51 Accessories

#### Shade accessory†

LCG-UFO-AL

## Skyline

Linear vapor tight  
LCG-2T & LCG-4T

Skyline linear vapor tight fixtures are designed to replace linear fluorescent lighting or for new construction where ceiling or pendant mounting in a weatherproof environment is required.



- Tri-proof LED fixture for IP65 waterproof, dust, corrosion, and pressure-proof
- Pendant and surface mounting for convenient installation
- 1200 mm fixture can be daisy-chained end-to-end, up to 15 fixtures

	600 mm	1200 mm	
System power	20 W	40 W	50 W
Input voltage	100-277 VAC, 50-60 Hz; MS option=180-264 VAC, 50-60 Hz		
Lumens†	2,600	5,200	6,500
Color temperatures (CCT)	3000 K, 4000 K, 5000 K		
Color rendering (CRI)	80		
Beam angle	120°		
Ingress protection	IP65		
Dimming	0-10 V and PWM/Triac dimming		
Finish	Frame: Clear, anodized aluminum End caps: White		

### Ordering Information

Part number

Example: LCG-4T-40W-U-40K-DC-EM

LCG-  -  -U-  -DC-

Body size		Wattage		Kelvin temp		Options	
Code	Desc.	Code	Desc.	Code	Desc.	Code	Desc.
2T	600 mm	20W	20 W	30K	3000 K	(blank)	None/Non-dimming
4T	1200 mm	40W	40 W	40K	4000 K	EM	30% Emergency battery
		50W	50 W	50K	5000 K	D1	0-10 V dimmable
						MS	Motion sensor

## RD Series

Recessed downlights

The SloanLED® RD Series of LED downlights offer exceptional performance and quality for spot, task, and wall washing in retail and commercial applications.



- Long life LED reduces maintenance costs
- Sealed lens keeps bugs out
- Easy to install spring clip mounting allows for quick retrofits or remodels
- Energy savings of more than 60% over CFL

	Adjustable (RDA)	Small (RDS)	Large (RDL)
System power	21 W	15 W	21 W
Input voltage	220-240 VAC		
Light output	2,037 Lumens	1,410 Lumens	2,000 Lumens
Color temperatures (CCT)	4000 K		
Color rendering (CRI)	>80		
Beam angle	20°	90°	
Ingress protection	IP20		
Life rating	>50,000 hours (L <sub>70</sub> )†		
Mounting	Spring clamps		

### Ordering Information

Part number

Example: 701977-4SDTW1

701977-4  1

Model	
Code	Desc.
SDTW	Small
LDTW	Large
ACCW	Adjustable

\* Available by special order, please contact SloanLED for lead times.

† Shade fits 100 W unit only.

‡ Tolerance +/-5%

## Indusun Round High Bay

High performance round high bay  
ISHB

Indusun Round High Bay delivers exceptional performance with four lumen packages, three different lens options for mid to high ceilings, rugged, die-cast construction, and separate optical and driver assemblies for superior thermal management.



- Wide range of brightness levels and beam angles accommodates any project
- Easy installation with hook mount or optional trunnion
- 1-10 V / PWM dimming standard
- Optional dimming or motion detection sensor DALI interface

Wattage	100 W	150 W	200 W	240 W†
Input voltage	100-277 VAC, 50-60 Hz			
Lumens*	17,500	26,250	35,000	42,000
Efficacy	175 lm/W			
Color temperature (CCT)	5000 K			
Color rendering (CRI)	80			
Beam angle	60°, 90°, or 120°			
Ingress protection	IP65			
Dimming	1-10 V (DALI/motion optional)			

### Ordering Information

#### Part number

Example: ISHB-100U-85060BKD-HM

ISHB-  U-850  BKD-HM

Wattage		Distribution	
Code	Desc.	Code	Desc.
100	100 W	60	60°
150	150 W	90	90°
200	200 W	120	120°
240†	240 W		

\* Based on 5000 K CCT.

† Available by special order. Contact SloanLED Sales.

## Indumoon Round High Bay

Standard round high bay  
IMHB

Indumoon Round High Bay delivers an exceptional combination of value and performance with four lumen packages, adjustable lens for mid to high ceilings, rugged, die-cast construction, and separate optical and driver assemblies for superior thermal management.



- Wide range of brightness levels and beam angles accommodates any project
- Easy installation with hook mount or optional trunnion
- Adjustable beam angle (65° - 105°) for mid to high ceilings
- 1-10 V dimming standard, optional DALI converter

Wattage	100 W	150 W	200 W	240 W†
Input voltage	100-277 VAC, 50-60 Hz			
Lumens*	14,000	21,000	28,000	33,600
Efficacy	140 lm/W			
Color temperature (CCT)	5000 K			
Color rendering (CRI)	80			
Beam angle	Adjustable, 65° - 105°			
Ingress protection	IP40			
Dimming	1-10 V (DALI)			

### Ordering Information

#### Part number

Example: IMHB-100U-85060BKD-HMM

IMHB-  U-850ADJBKD-HM

Wattage	
Code	Desc.
100	100 W
150	150 W
200	200 W
240†	240 W

# Refrigerated Display

Cold Series™ refrigerated display LED lighting systems use cutting edge LED technology to combine efficiency, performance, and value for state of the art merchandising.



## Cold Deck FIT

LED lighting system for multi-deck merchandisers

Cold Deck FIT lighting system is designed to optimize visual appeal of produce, meat, and dairy cases (multi-deck merchandisers). Extends shelf life of perishables through reduced heat output.



- Illuminates product facings with crisp, uniform light dispersion
- Optimize visual appeal and color accuracy of meat products with new "Prime" meat-tuned LED chip
- Waterproof (IP68) for produce "wet zones" or spray down maintenance of display cases
- **Up to 77% energy savings compared with typical fluorescent fixtures**

## Cold Door 4

LED lighting system for cooler doors

Cold Door 4 LED lighting system provides the perfect balance of intensity and color rendition to deliver crisp, uniform illumination across doors for walk-in coolers/freezers and remote glass-door reach-ins.



- Three styles to choose from: **ECO** for maximum energy savings, **Performance** for higher illumination levels, **French Door** for bright, uniform illumination in double-door applications
- Complete suite of options comes in lengths of 1.2, 1.5, 1.7, and 1.8-m (4, 5, 6, and 7-ft), ensuring solutions for all door sizes
- Delivers bright, uniform light, vibrant color, and reduced glare to product facings at depths as shallow as 50 mm (2")

## 24 VDC Power Supplies – Compatible with SloanLED 24 VDC Refrigerated Display products



Model	Part number	Dimensions	Nominal input voltage	Max. input current	Power output	Location rating	Operating temperature	Protection class
<b>100L1(D) 100 W</b> <i>Dimming and non-dimming</i>	701895-100L1(D)	241 mm × 43 mm × 25 mm (9.5 in × 1.7 in × 1.0 in)	120-277 VAC, 50-60 Hz	0.95 A	100 W @ 24 VDC, Class 2 output	Dry and damp locations	-40° C to +60° C, derate to 50% of max load at +60° C	IP54



Cold Deck FIT		0.3 m (1')	0.9 m (3')	1.2 m (4')	
Input voltage		100-240 VAC, 50-60 Hz			
Output voltage		24 VDC, Class 2 low voltage			
Fixture power	Canopy	2.3 W	9.0 W	11.3 W	
	Shelf	1.1 W	3.4 W	4.5 W	
Illuminance	2700 K	Canopy	241	963	1204
		Shelf	137	410	547
	3500 K	Canopy	266	1063	1329
		Shelf	153	797	611
	4000 K	Canopy	276	1104	1380
		Shelf	158	472	630
	Prime	Canopy	N/A	N/A	630
		Shelf			313
Color temperatures (CCT)		2700 K, 3500 K, 4000 K, Prime (meat-tuned)*			
Color rendering (CRI)		>80			
Dimming		Optional Motion Sensing <sup>‡</sup>			
Ingress protection		IP68 (highest dust and water protection)			
Life rating		>60,000 hours (L <sub>50</sub> ) <sup>°</sup>			
Body color		Smooth white			

Ordering Information																																					
Part number Example: 701940-4WC4F1																																					
701940- <input type="text"/> - <input type="text"/> - <input type="text"/> F1																																					
<table border="1"> <thead> <tr> <th colspan="2">Kelvin temperature</th> <th colspan="2">Type</th> <th colspan="2">Length</th> </tr> <tr> <th>Code</th> <th>Desc.</th> <th>Code</th> <th>Desc.</th> <th>Code</th> <th>Desc.</th> </tr> </thead> <tbody> <tr> <td>MW</td> <td>Prime (meat-tuned)*</td> <td>C</td> <td>Canopy</td> <td>1</td> <td>0.3-m (1-ft)</td> </tr> <tr> <td>2W</td> <td>2700 K</td> <td>S</td> <td>Shelf</td> <td>3</td> <td>0.9-m (3-ft)</td> </tr> <tr> <td>3W</td> <td>3500 K</td> <td></td> <td></td> <td>4</td> <td>1.2-m (4-ft)</td> </tr> <tr> <td>4W</td> <td>4000 K</td> <td></td> <td></td> <td></td> <td></td> </tr> </tbody> </table>	Kelvin temperature		Type		Length		Code	Desc.	Code	Desc.	Code	Desc.	MW	Prime (meat-tuned)*	C	Canopy	1	0.3-m (1-ft)	2W	2700 K	S	Shelf	3	0.9-m (3-ft)	3W	3500 K			4	1.2-m (4-ft)	4W	4000 K					
Kelvin temperature		Type		Length																																	
Code	Desc.	Code	Desc.	Code	Desc.																																
MW	Prime (meat-tuned)*	C	Canopy	1	0.3-m (1-ft)																																
2W	2700 K	S	Shelf	3	0.9-m (3-ft)																																
3W	3500 K			4	1.2-m (4-ft)																																
4W	4000 K																																				

Cold Deck FIT Accessories<sup>§</sup>

Stand-off clip	401091
5 clip spanner wrenches	401368-5
Small terminal block	401350
Large terminal block	401351

Cold Deck FIT Dimming

Dimming controller	701890-PWR
Occupancy sensor, Standard <sup>‡</sup>	400661
Occupancy sensor, Wide <sup>‡</sup>	400964

Cold Door 4		1.2 m (4')			1.5 m (5')			1.7 m (6')			1.8 m (7')			
		3500 K	4000 K	5000 K	3500 K	4000 K	5000 K	3500 K	4000 K	5000 K	3500 K	4000 K	5000 K	
Input voltage		100-277 VAC (to power supply) <sup>°</sup>												
Fixture voltage		24 VDC												
Lumens	ECO	Center	1327.5	1,333.9	1,347	1,787.7	1,796.3	1,814	1,787.7	1,796.3	1,814	1,787.7	1,796.3	1,814
		End	663.7	667	673.5	893.8	898.2	907	893.8	898.2	907	893.8	898.2	907
	Performance	Center	1,700.4	1,716.6	1,745	2,055	2,073	2,109	2,409.5	2,432.7	2,473	2,591	2,615.8	2,659.1
		End	850.2	858.3	872.5	1,027.5	1,036.5	1,054.5	1,204.8	1,216.4	1,236.5	1,295.5	1,307.9	1,329.6
	French Door	Center	2,197	2,220	2,266.1	2,654.9	2,682.7	2,738.4	3,112.8	3,145.4	3,210.6	3,341	3,376	3,446
		End	1,098.5	1,110	1,133.1	1,327.5	1,341.4	1,369.2	1,556.4	1,572.7	1,605.3	1,670.5	1,688	1,723
System power	ECO	Center	9.31 W	9.21 W	9.12 W	12.54 W	12.41 W	12.28 W	12.54 W	12.41 W	12.28 W	12.54 W	12.41 W	12.28 W
		End	4.3 W	4.65 W	4.61 W	6.27 W	6.2 W	6.14 W	6.27 W	6.2 W	6.14 W	6.27 W	6.2 W	6.14 W
	Performance	Center	12.98 W	12.88 W	12.76 W	15.69 W	15.56 W	15.42 W	18.39 W	18.25 W	18.08 W	19.78 W	19.63 W	19.44 W
		End	6.49 W	6.44 W	6.38 W	7.84 W	7.78 W	7.71 W	9.2 W	9.13 W	9.04 W	9.9 W	9.82 W	9.72 W
	French Door	Center	16.29 W	16.29 W	16.3 W	19.68 W	19.69 W	19.69 W	23.08 W	23.08 W	23.09 W	24.77 W	24.78 W	24.78 W
		End	8.14 W	8.15 W	8.15 W	9.84 W	9.85 W	9.85 W	11.54 W	11.54 W	11.54 W	12.39 W	12.39 W	12.39 W
Efficacy (lm/W)	ECO	Center	143	145	148	143	145	148	143	145	148	143	145	148
		End	131	133	137	131	133	137	131	133	137	131	133	137
	Performance	Center	131	133	137	131	133	137	131	133	137	131	133	137
		End	135	136	139	135	136	139	135	136	139	135	136	139
	French Door	Center	135	136	139	135	136	139	135	136	139	135	136	139
		End												
Color rendering (CRI)		>80												
Life rating		>60,000 hours (L <sub>50</sub> ) at maximum operating conditions												
Dimming		Optional Motion Sensing <sup>‡</sup>												
Body color		Black (White cover)												

Ordering Information																																																																																					
Part number Example: 701906-4WC5V4																																																																																					
701906- <input type="text"/> - <input type="text"/> - <input type="text"/>																																																																																					
<table border="1"> <thead> <tr> <th colspan="2">Color temp. (CCT)</th> <th colspan="2">Type</th> <th colspan="2">Length (nominal)</th> </tr> <tr> <th>Code</th> <th>Desc.</th> <th>Code</th> <th>Desc.</th> <th>Code</th> <th>Desc.</th> </tr> </thead> <tbody> <tr> <td>35W</td> <td>3500 K</td> <td>C</td> <td>Center</td> <td>4V4</td> <td>1.2-m (4-ft)</td> </tr> <tr> <td>4W</td> <td>4000 K</td> <td>E</td> <td>End</td> <td>5V4</td> <td>1.5-m (5-ft)</td> </tr> <tr> <td>5W</td> <td>5000 K</td> <td></td> <td></td> <td>6V4</td> <td>1.7-m (6-ft)</td> </tr> <tr> <td></td> <td></td> <td></td> <td></td> <td>7V4</td> <td>1.8-m (7-ft)</td> </tr> <tr> <td></td> <td></td> <td></td> <td></td> <td>4X4</td> <td>1.2-m (4-ft)</td> </tr> <tr> <td></td> <td></td> <td></td> <td></td> <td>5X4</td> <td>1.5-m (5-ft)</td> </tr> <tr> <td></td> <td></td> <td></td> <td></td> <td>6X4</td> <td>1.7-m (6-ft)</td> </tr> <tr> <td></td> <td></td> <td></td> <td></td> <td>7X4</td> <td>1.8-m (7-ft)</td> </tr> <tr> <td></td> <td></td> <td></td> <td></td> <td>4F4</td> <td>1.2-m (4-ft)</td> </tr> <tr> <td></td> <td></td> <td></td> <td></td> <td>5F4</td> <td>1.5-m (5-ft)</td> </tr> <tr> <td></td> <td></td> <td></td> <td></td> <td>6F4</td> <td>1.7-m (6-ft)</td> </tr> <tr> <td></td> <td></td> <td></td> <td></td> <td>7F4</td> <td>1.8-m (7-ft)</td> </tr> </tbody> </table>	Color temp. (CCT)		Type		Length (nominal)		Code	Desc.	Code	Desc.	Code	Desc.	35W	3500 K	C	Center	4V4	1.2-m (4-ft)	4W	4000 K	E	End	5V4	1.5-m (5-ft)	5W	5000 K			6V4	1.7-m (6-ft)					7V4	1.8-m (7-ft)					4X4	1.2-m (4-ft)					5X4	1.5-m (5-ft)					6X4	1.7-m (6-ft)					7X4	1.8-m (7-ft)					4F4	1.2-m (4-ft)					5F4	1.5-m (5-ft)					6F4	1.7-m (6-ft)					7F4	1.8-m (7-ft)	
Color temp. (CCT)		Type		Length (nominal)																																																																																	
Code	Desc.	Code	Desc.	Code	Desc.																																																																																
35W	3500 K	C	Center	4V4	1.2-m (4-ft)																																																																																
4W	4000 K	E	End	5V4	1.5-m (5-ft)																																																																																
5W	5000 K			6V4	1.7-m (6-ft)																																																																																
				7V4	1.8-m (7-ft)																																																																																
				4X4	1.2-m (4-ft)																																																																																
				5X4	1.5-m (5-ft)																																																																																
				6X4	1.7-m (6-ft)																																																																																
				7X4	1.8-m (7-ft)																																																																																
				4F4	1.2-m (4-ft)																																																																																
				5F4	1.5-m (5-ft)																																																																																
				6F4	1.7-m (6-ft)																																																																																
				7F4	1.8-m (7-ft)																																																																																

Cold Door 4 Dimming

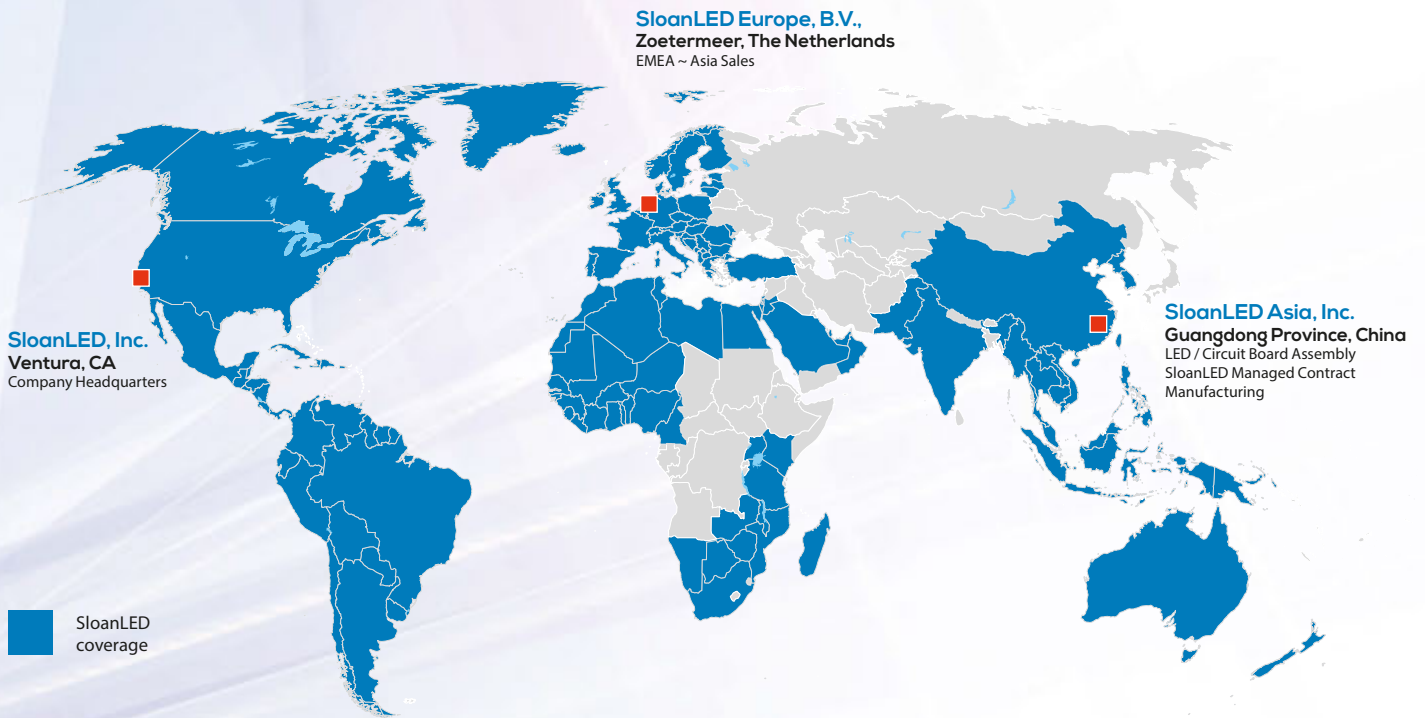
Dimming controller <sup>°</sup>	701890-PWR
Occupancy sensor, standard	400661 <sup>‡</sup>
Occupancy sensor, wide	400964 <sup>‡</sup>





# No matter where you are. We've got you covered.

From Alaska to Australia, with 150+ employees, and the best global coverage in the industry, we've got you covered.



**SloanLED Headquarters**  
5725 Olivas Park Drive, Ventura, CA, USA  
805.676.3200 • info@SloanLED.com

**SloanLED Europe b.v.**  
Argonstraat 110, 2718 SN Zoetermeer, NL  
+31 88 12 44 900 • europe@SloanLED.com



**SloanLED.com**

Trade names, marks and logos shown are the property of their respective owners. Specifications may change without notice.

© 2022 SloanLED Rev AF 2022-03-28

